

# MANGUSTA

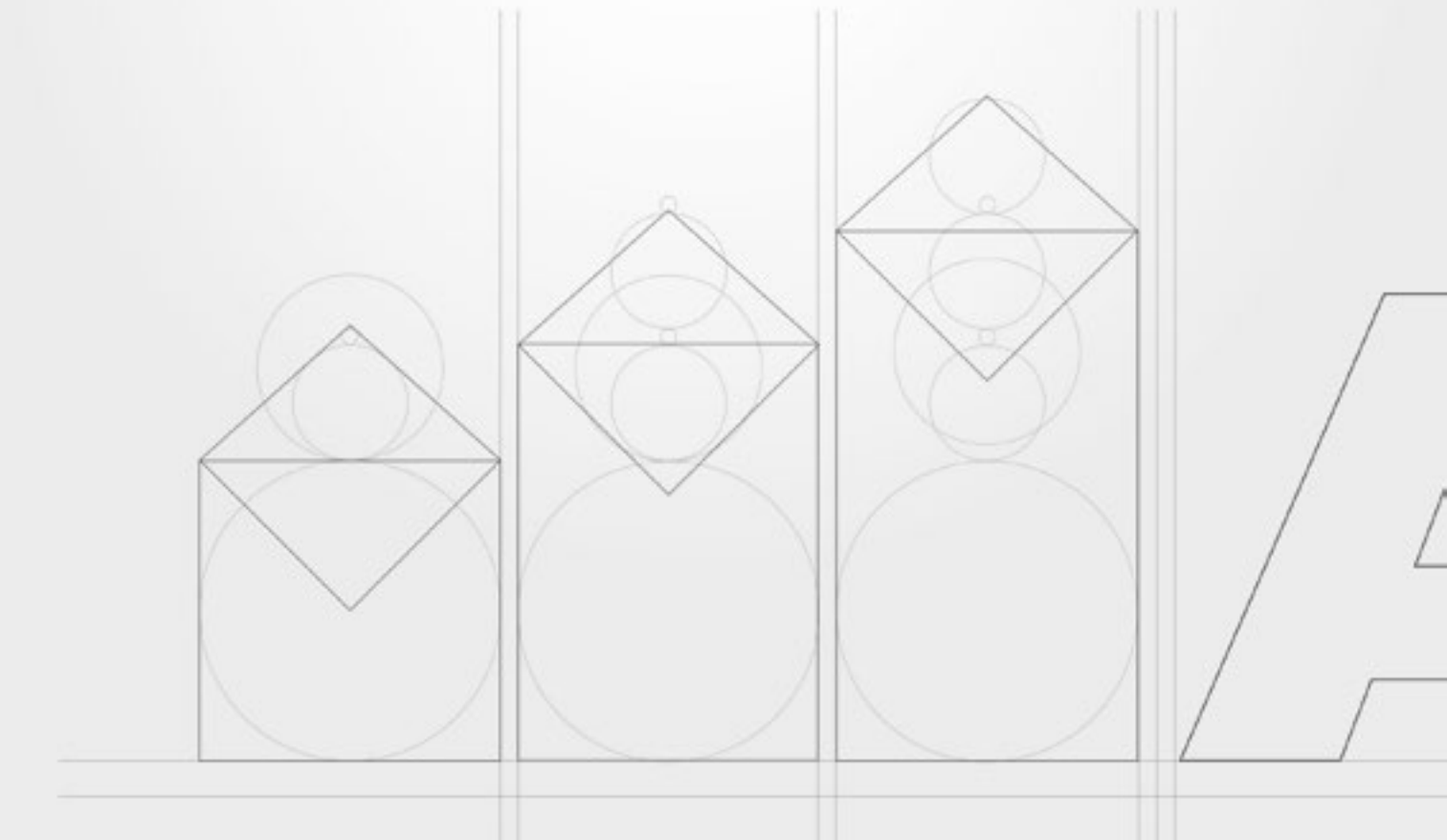
Energy-Saving Lifts

# Table of contents

<b>OUR STORY</b>	<b>5</b>
The first company to produce battery-only plants	6
<b>OUR TECHNOLOGY</b>	<b>9</b>
The first battery platform	10
Our eco-sustainable technology	12
Maximum power used	14
Anti-blackout system	17
Other advantages offered by Mangusta	18
<b>CONFIGURATIONS</b>	<b>21</b>
Tailor-made projects	22
Configurations	26
Automatic doors	28
Swing doors	30
Cabin	34
Metal structure	42
<b>FINISHES &amp; ACCESSORIES</b>	<b>45</b>
Finishes	46
Accessories	56
<b>TECHNICAL SPECIFICATIONS</b>	<b>61</b>



ARE



01  
OUR STORY



## THE FIRST COMPANY TO PRODUCE BATTERY-ONLY PLANTS

A.R.E Srl was founded in 2009 thanks to the Franco Antonelli's futuristic vision.

Born in 1938, Franco had been acquiring experience in the sector since 1953 when, in 1995, he was the first person to develop a technology which allowed platforms, up until that point considered unsafe and with limited installation potential, to surpass the 4-metre limit and become reliable and incredibly energy-efficient products.

In 2003, he introduced another important innovation into the elevation sector, using batteries as the main source of power for Lifts.

Up until that point, batteries had been used on the side lines and only for lifting platforms. Franco's vision materialised into a successful venture: A.R.E., acronym for Ascensori a Risparmio Energetico (N.d.T. Energy-Saving Lifts) is a young, dynamic company investing constantly in the development of new solutions and technologies capable of guaranteeing its lifts maximum efficiency and respect for the environment.



*We don't just manufacture lifting systems, we create lifestyle solutions, where energy saving and ecological sustainability lie at the heart of the choice of product to be installed in your home or workplace.*





# 02

**OUR TECHNOLOGY**

# THE FIRST BATTERY PLATFORM

MANGUSTA is an electrically battery-powered Platform launched on the market for the first time in 2009. MANGUSTA, like all our lifts, benefits from **ARE SMART POWER** technology. This technology offers many **advantages**:



## ANTI BLACK-OUT SYSTEM

The MANGUSTA Platform's main power supply is based on the use of batteries. It is, therefore, possible to continue using the lift even if there is an unexpected power cut, which guarantees accessibility and safety at all times.



## COMMITTED POWER

MANGUSTA consumes just 230W, on a par with that needed to use everyday electrical appliances.



## SOLAR PANELS

The possibility of having the MANGUSTA platform with solar panels means SOLAR POWER can be used as a source of SUSTAINABLE ENERGY.



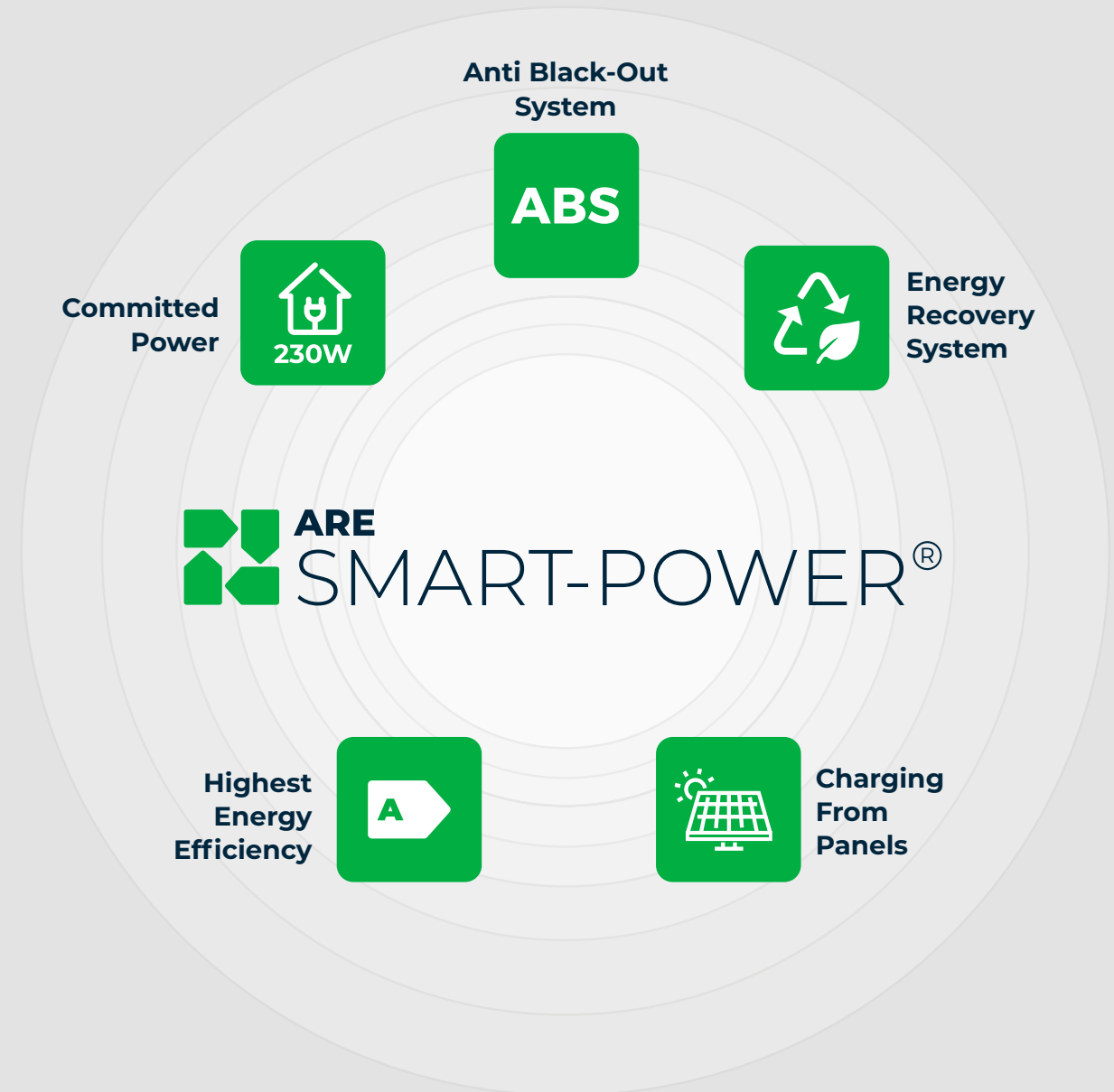
## ENERGY RECOVERY SYSTEM

While in use, the energy produced by MANGUSTA is not wasted as heat but stored in the batteries by optimising the performance levels of the lift and dramatically bringing down electricity supply costs.



## HIGHEST ENERGY EFFICIENCY

MANGUSTA offers higher performance levels than those of an oleodynamic lift with lower electricity consumption.



# OUR ECO-SUSTAINABLE TECHNOLOGY

WE PROTECT THE ENVIRONMENT IN ORDER TO PROTECT OUR FUTURE

ARE is constantly investing in research into eco-sustainable solutions that significantly contribute to reducing the impact on the environment. Our technicians have taken this direction in developing **ARE SMART POWER**. The energy recovery System and the presence of solar panels ensure that the minimum amount of electricity is absorbed from the power grid.



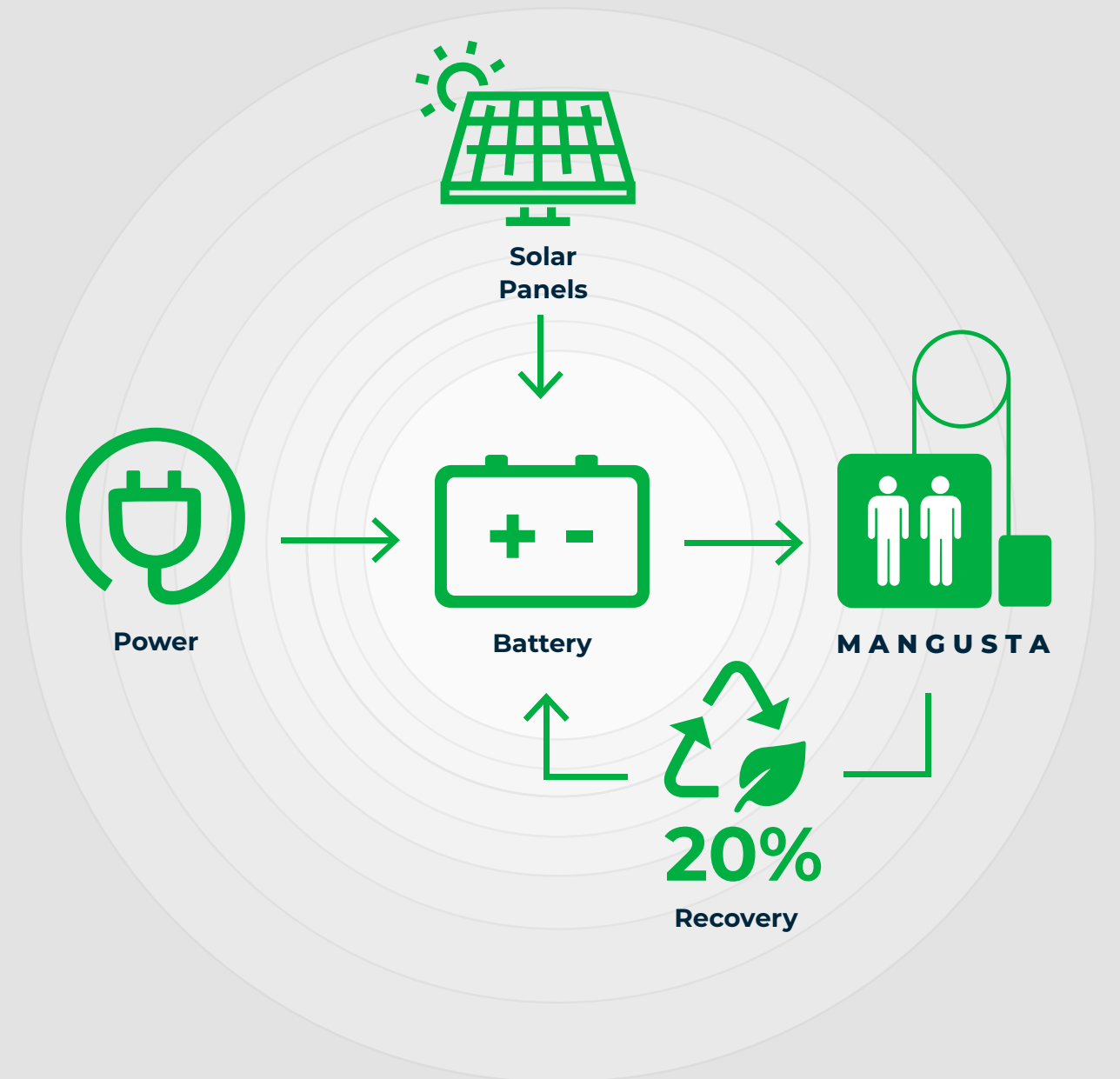
## ENERGY RECOVERY SYSTEM

The MANGUSTA Platform can generate energy during normal usage phases: when the cabin is going up empty or when it is going down and is full. The energy produced is not lost but stored in the batteries. Thanks to the use of this technology, on average, one in every five times it is used, it does not absorb energy from the grid but uses what has been stored in the batteries. Self-powering guarantees a real reduction in consumption which translates into lower running costs.



## CHARGING FROM SOLAR PANELS

The **ARE SMART POWER** technology allows you to make the most of the renewable energy generated by the sun to recharge the batteries and minimise the amount absorbed from the power grid, all done by simply installing a solar panel. This solution not only reduces the cost of electricity needed to use the Lift but guarantees respect for the environment by taking a large leap towards a sustainable economy and use of circular energies.







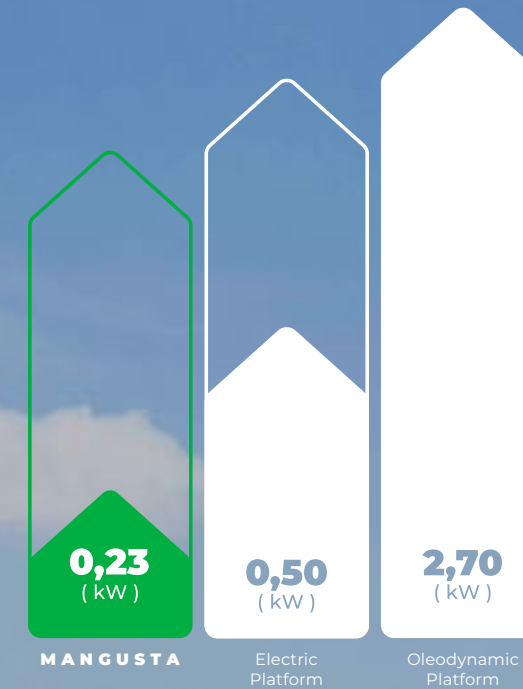
## MAXIMUM POWER USED

The power given on the electricity supplier's meter is the level of power indicated in the supply contract.

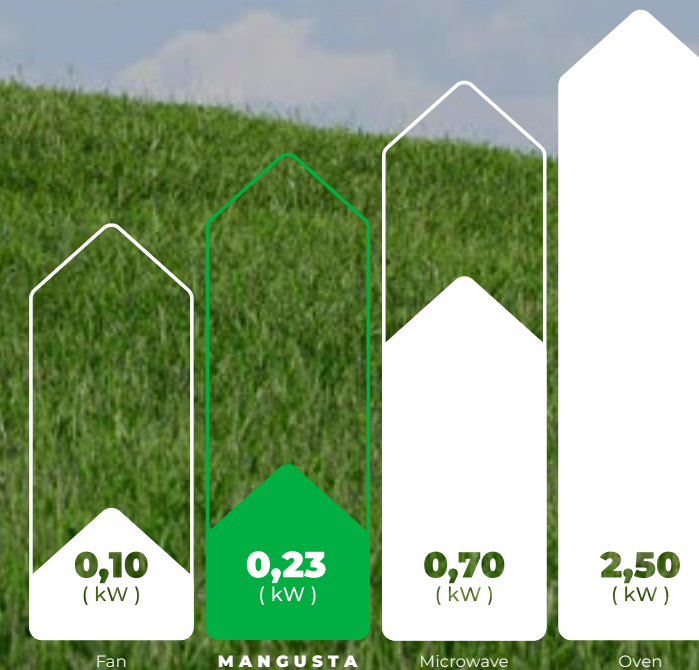
Most of the contracts for residential homes have a power usage of around 3 kW with a tolerance of +10%, that is, it is possible to withdraw up to 3.3 kW without any time limits. Over and above this limit, the supplier automatically cuts the energy supply by making the meter switch "trip" which then needs to be manually re-activated. Frequent cut-offs indicate a need for more power to meet the higher demands. In these cases, a request will need to be made to the supplier to increase the power supply by changing the existing contract and this will involve higher supply costs.

Thanks to the technology developed by A.R.E, the maximum power used by MANGUSTA is just 0.13 kW, on a par with that of an average electrical appliance. There is no need, therefore, to change the supply contract stipulated, nor is there any need to install another meter with a higher power level. This is an advantage as the supplier's management costs for supplying electricity will not increase.

## MANGUSTA | Other lifts



## MANGUSTA | Other household appliances





**ABS**

## ANTI-BLACKOUT SYSTEM

---

**A.R.E. technology**, unlike that used by other manufacturers, relies on the use of **BATTERIES** as the main power system for its lifting systems and only uses the power grid to run the battery charging system.

That technology guarantees that **MANGUSTA** can operate normally even in the event of a power cut (on average for more than 20 uses).

This is the concept of "ALWAYS WORKING" common to all A.R.E. Lifts.



NOT ONLY ENERGY SAVING

# OTHER ADVANTAGES OFFERED BY MANGUSTA



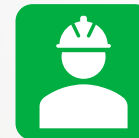
## MOTOR ROOM LESS

With MANGUSTA, there is no need for space to house oleodynamic control units and manoeuvring switchboards. The motor unit is located inside the lift well and the manoeuvring switchboard can be incorporated into a floor door.



## COMFORTABLE AND QUIET

Soft departure and arrival, stopping precision and silence are the distinctive features of MANGUSTA, designed and manufactured to offer maximum comfort.



## SAFETY

MANGUSTA has a speed limiter which prevents uncontrolled cabin movement wherever it is. This limiter equates to compulsory devices found in lifts which comply with EN81-20:2014, 5.6.



## ECO-FRIENDLY AND CLEAN

MANGUSTA respects the environment because it does not use any kind of oil, even as a lubricant for the guides.





# 03

**CONFIGURATIONS**

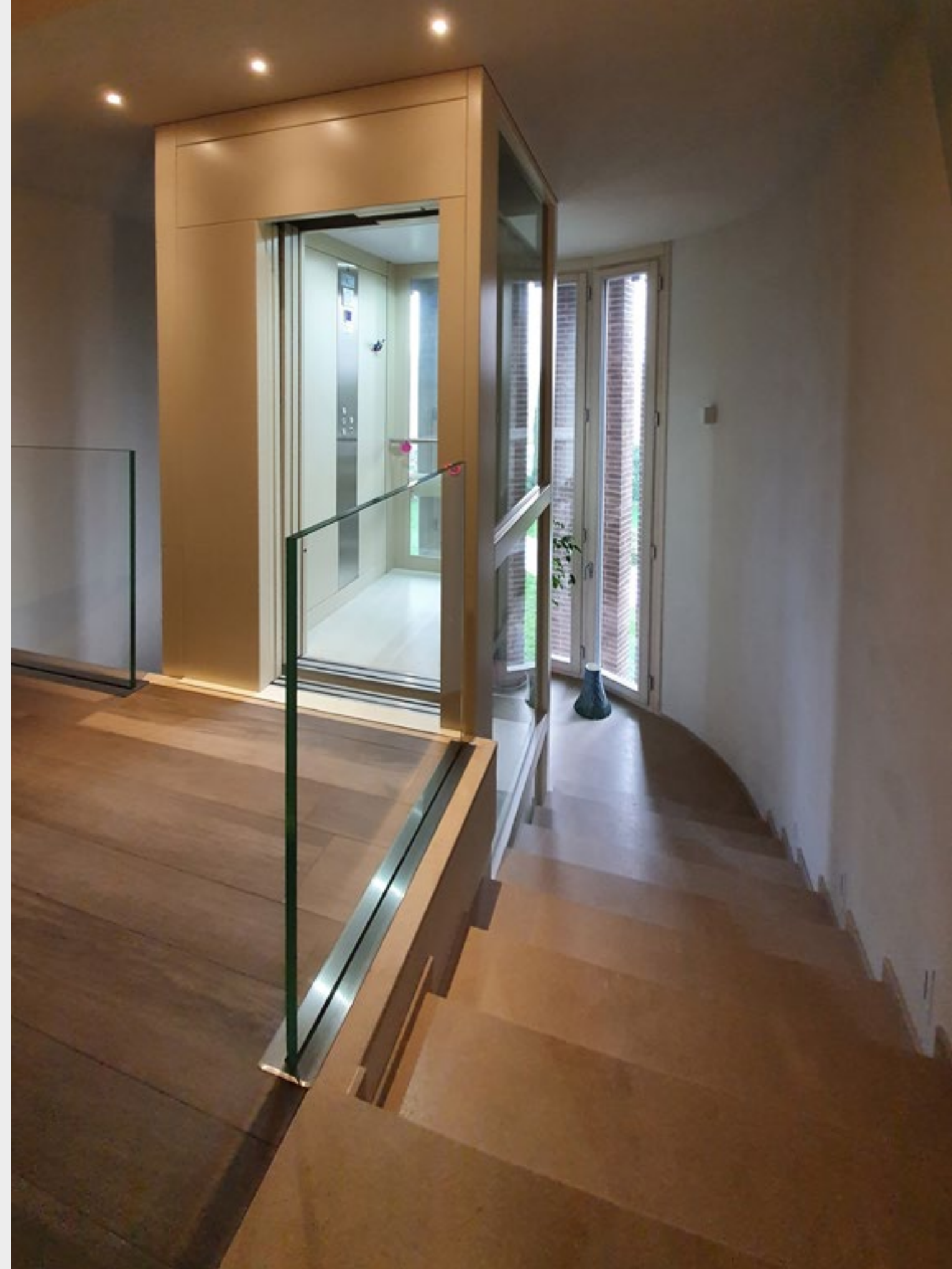


## TAILOR-MADE PROJECTS

---

You are unique just like our products designed for you are unique. Every client and each project require a specific solution. We are here for this, to look after your needs and satisfy your demands.

Each MANGUSTA, designed by us, is a unique piece, designed specifically for you. Our technology is here to assist you and the wide range of materials and colours makes choosing the solutions that can meet any demand easier.









# VARIANTS

Possible MANGUSTA Platform configurations are as follows:

## NO DOORS

With this version, the cabin's manoeuvring is manual (defined as "with human presence") and there is always a full-height, multi-ray barrier photocell.

## FOLDING CAR DOORS

The folding cabin door offers the chance for automatic manoeuvre in the cabin even in limited spaces.

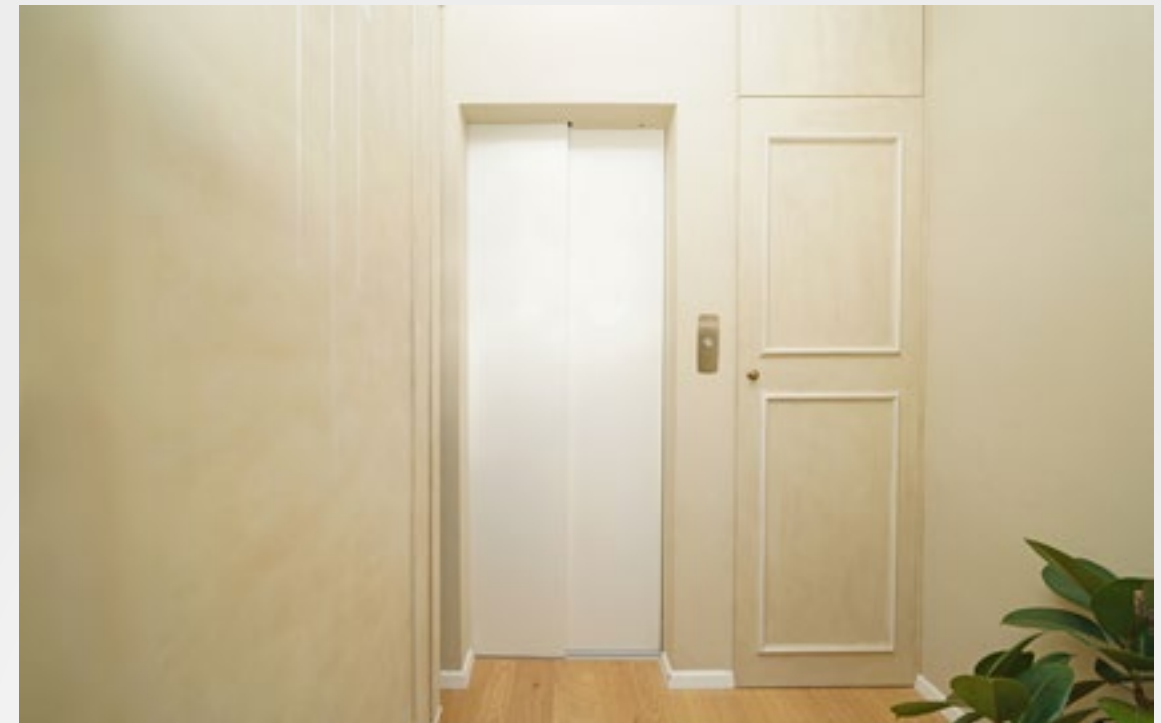
## AUTOMATIC DOORS

MANGUSTA is completely automatic in this version

VARIANTS	USER'S MANEUVER	
	CAR	LAND
No doors	Manual	Automatic
Folding car doors	Automatic	Automatic
Automatic doors	Automatic	Automatic

**MANUAL :** Keep the button pressed for the entire duration of the course.

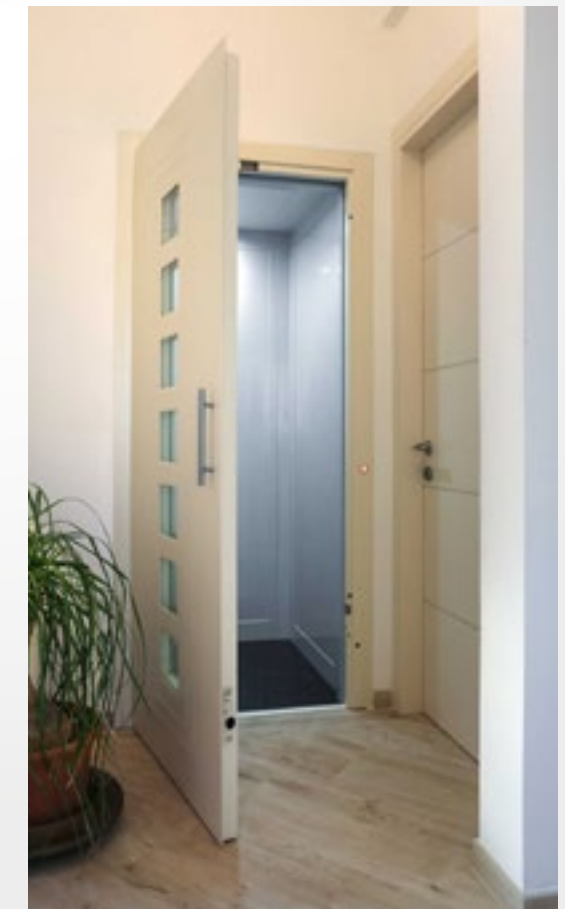
**AUTOMATIC :** Press the button to activate the plant, just like a lift.



Automatic doors



Folding car doors



No doors





# AUTOMATIC DOORS

Automatic floor and cabin doors complete with threshold unit floor-flush frame suspension with stainless-steel facing and threshold cover. Available with telescope closure with 2 wings or 3 wings and central closure with 2 and 4 wings. Folding cabin doors with electronic command system complete with operator wings and threshold, movement controlled by a mobile frame.

## STANDARD



## FIRE RESISTANT



Automatic fire door EI 60 e EI-120.

## GLASS & METAL



Panoramic laminated glass and metallic frame.

## TOTAL GLASS



Laminated clear glass, polished stainless steel upper and lower fixing devices.

STAINLESS STEEL ✓

RAL PAINT FINISH ✓

LAMINATED SHEET ✓

GALVANISED & RAL PAINT FINISH ✓

## FOLDING DOOR



STAINLESS STEEL ✓

RAL PAINT FINISH ✓

## PANORAMIC FOLDING DOOR



# SWING DOORS

Semi-automatic swing doors, manual opening and automatic closure by return spring. Adaptable to any environment, with combinations of finishes, colours, glass and sizes.

## WINDOW



- ✓ RUST-PROOF PAINT FINISH
- ✓ RAL PAINT FINISH
- ✓ GALVANISED & RAL PAINT FINISH



### FIRE RESISTANT

EI-120 Fire resistant single panel swing door with electrical safety lock. Semiautomatic, manual opening and automatic closing with return spring and damper, uprights with carters.



- RUST-PROOF  
PAINT FINISH ✓
- RAL  
PAINT FINISH ✓
- GALVANISED &  
RAL PAINT FINISH ✓

### THERMAL BREAK

Thermal break door to a hinged degree of transmittance thermal  $U = 2,12 \text{ W/m}^2\text{K}$  mineral wool in the leaf and in the frame (box). Gaskets of parafreddo stop along the door perimeter and lower floor hood profile.



### ARMOURED

Armored door with reinforced frame and door leaf, steel hinge. Armored lock with 4 pins with or without latch variant key/ key or external key inner shell. Semi-automatic, manual opening and automatic closing by return spring and shock absorber, uprights carterized. Vertical guardrails on request



1. Armoured lock

- RUST-PROOF  
PAINT FINISH ✓
- RAL  
PAINT FINISH ✓
- GALVANISED &  
RAL PAINT FINISH ✓

### ALLUMINIUM

Single panel Aluminium Panoramic model swing door with mechanical safety lock. Leaf made by extruded aluminium profile and panoramic glass without glazing beads, uprights and lintel made by extruded aluminium if the width is 100 mm, if different built in steel sheet and aluminium covered, stainless steel sill profile. Semiautomatic, manual opening and automatic closing with return spring and damper. Uprights with carters.



- NATURAL  
ALUMINIUM ✓
- RAL PAINT  
FINISH ALUMINIUM ✓



- 1. Profils in natural silver color anodized aluminium
- 2. Stainless steel tube handle T20

### CRYSTAL

Crystal model single panel swing door with safety lock. Leaf in tempered laminated 8+8 glass, stainless steel handle and hinges. Semiautomatic, manual opening and automatic closing with adjustable hydraulic door closer, located inside the lintel and provided with 90° stop. Uprights with carters.



- 1. Handle in stainless steel RC40
- 2. Handle in stainless steel T20 e T30
- 3. Handle in stainless steel TC30
- 4. Handle in stainless steel R40

- STAINLESS  
STEEL ✓
- RAL  
PAINT FINISH ✓





# CAR

## MONOLITH

### A modern design for an exclusive result

The Monolith cabin features a subtle and elegant line and can be customised to suit even the most demanding clients' requests.

The standard product can be enhanced by choosing the skirting board and button in different materials and colours from those on the walls.

### Every detail has been thought out

The side panels are always designed in proportion to the central panel whatever the size of the cabin.

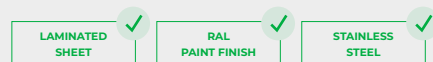
The same proportion continues in the cabin's roof profiles with a perfectly harmonious result.

### Highly robust and silent

The walls with vertical slats are not only aesthetic and design elements, but also have the dual function of increasing sturdiness and simplifying the Monolith assembly process.

Furthermore, the exclusive design significantly reduces the noise caused by micro vibrations.

The final effect is to make MANGUSTA even quieter and more comfortable.





*Plinth:*  
Scotch Brite  
stainless steel

*Control panel:*  
Scotch Brite  
stainless steel



*Plinth:*  
Scotch Brite  
stainless steel

*Control panel:*  
Scotch Brite  
stainless steel





## ELEGANT

### **The new design proposal**

Elegant is the new line of cabins in Laminated Plastic with a state-of-the art and elegant design.

### **The refinement of the modern design**

**Elegant Plus** is the most innovative proposal with horizontal wall slats covered and profiled in plastic laminate. The walls are enhanced with finishings with stainless steel angles.

### **The refinement of the classic**

**Elegant Unique** is the most classic proposal and always modern with walls covered in plastic laminate and enhanced with stainless steel angles and skirting board.

### **A unique cabin that is just as unique as your requirements**

The new range of colours proposed for the walls includes both natural shades of wood and more sophisticated, paler colours.

The finishing in faux wood can perfectly reproduce the elegance of wood without compromising its resistance and enhancing the environment in which the cabin is installed.

In order to satisfy demands from the most exacting clients, both the colour of the walls and the finishings can be customised by choosing between Scotch-Brite stainless steel (standard supply) polished stainless steel and dam.

Each cabin is the result of a combination of a vast selection of materials with a unique and exclusive end product.







Elegant Plus



Elegant Unique



## METAL STRUCTURE

MANGUSTA can be supplied complete with metal structure well suited to being positioned both inside and outside the construction.

In order to meet all our customers' requirements, descent walkways are available (with parapets in metal or glass) with completely closed walkways, complete with transom windows and rain canopies (with sheet metal or glass cladding) and RAL painted doors and frames.

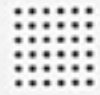
All the structures comply with current construction standards. It is possible to request glass cladding (see pag. 49) and panels in RAL painted metal sheets.



RAL  
PAINT FINISH ✓

GALVANISED &  
RAL PAINT FINISH ✓





# 04

**FINISHES & ACCESSORIES**



# FINISHES

## LAMINATED SHEET

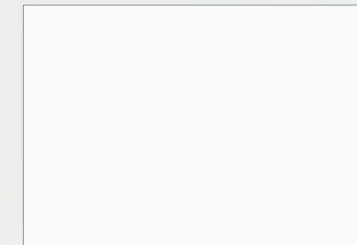
for automatic doors in the 115 System, Minisill, Glass & Metal models, please refer to the finishings for landind doors.



*Ceiling:*  
A49PP  
Shiny White

*Walls:*  
A49PP  
Shiny White

*Floor:*  
Coating by  
the client



A49PP Shiny White



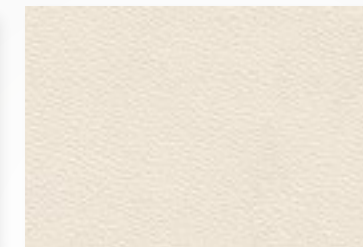
PPS10 Shiny Ivory



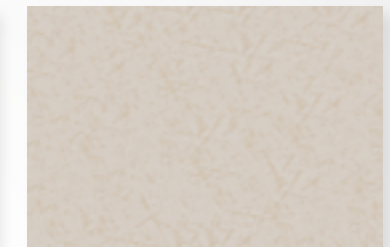
DT29SMA Brushed Grey



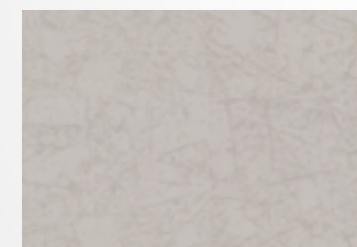
N1 Embossed Grey



A13 Embossed Beige



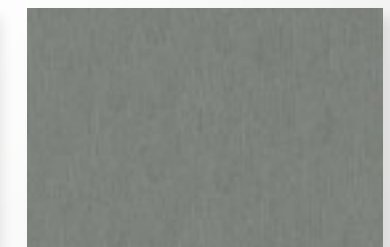
PPS11 Shiny Beige



PPS6 Shiny Silk



B10SMA Embossed Midnight Blue



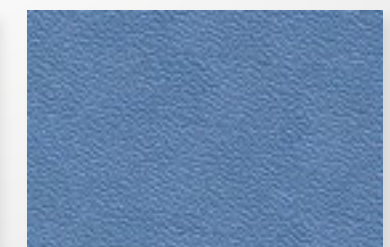
F12PPS Similinox



G4SA Matt Orange



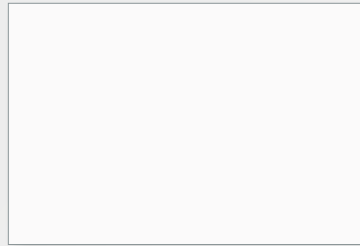
R2 Embossed Red



B1 Embossed Blue



## LAMINATED SHEET



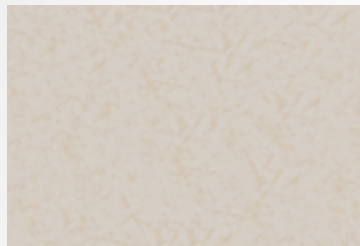
A49PP Shiny White



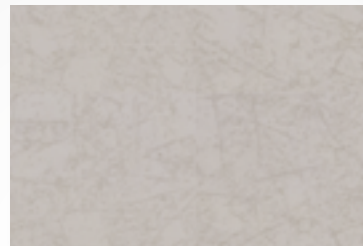
PPS10 Shiny Ivory



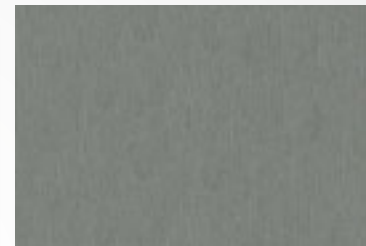
A13 Embossed Beige



PPS11 Shiny Beige



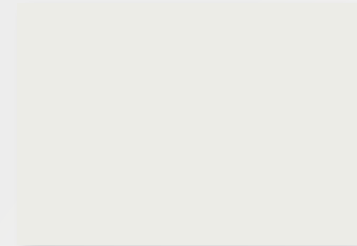
PPS6 Shiny Silk



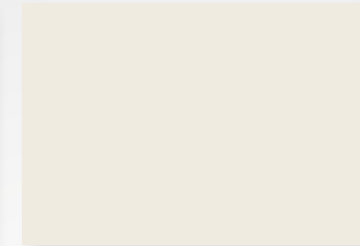
F12PPS Similinox

## RAL PAINT FINISH <sup>1</sup>

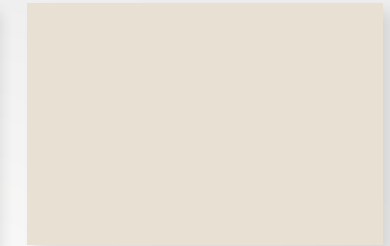
The colours shown may not be correctly represented. Please refer to the official RAL cards when choosing the RAL colour.



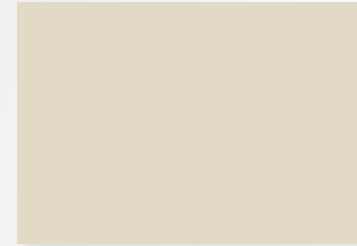
RAL 9003 Signal White



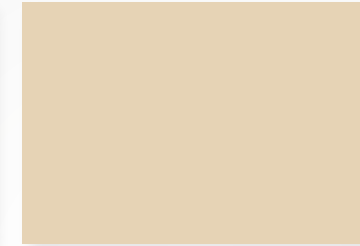
RAL 9010 Pure White



RAL 9001 Cream White



RAL 1013 Pearl White



RAL 1015 Clear Ivory



RAL 7035 Light Grey



RAL 7037 Dusty Grey



RAL 7001 Silver Grey



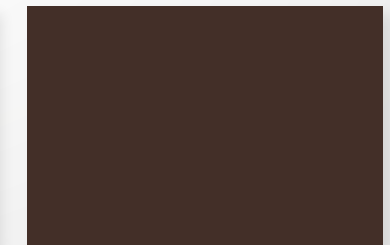
RAL 9006 Bright Aluminium



RAL 9007 Grey Aluminium



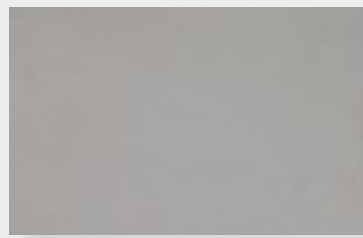
RAL 7016 Charcoal Grey



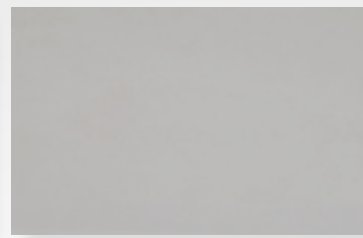
RAL 8017 Chocolate Brown



## STAINLESS STEEL



Polished 7



Polished BA



Scotch Brite



Dam Stainless Steel



Linen

Stainless steel supply recommended

STAINLESS STEEL	For indoor	For outdoor	Seafront
AISI 430 Scotch Brite	✓	—	—
AISI 304 Polished BA	✓	✓	—
AISI 304 Polished 7	✓	✓	—
AISI 304 Dam Stainless Stell	✓	✓	—
AISI 304 Linen	✓	✓	—
AISI 316 Polished BA	✓	✓	✓

- AUTOMATIC CAR DOOR
- AUTOMATIC LANDING DOOR
- CRYSTAL DOOR
- MONOLITH CAR
- FOLDING CAR DOOR
- TECHNICAL CABINET

## GLASS



Trasparent



Satin



Milky white



Smoked



Bronze



Bronze Stop-Sol



Grey Stop-Sol

- WINDOW SWING DOOR
- PLUGGING STRUCTURE
- CRYSTAL DOOR
- ALUMINIUM DOOR
- GLASS & METAL DOOR
- TOTAL GLASS DOOR
- PANORAMIC CAR WALL
- PANORAMIC FOLDING DOOR





## PVC

These floors are a PUR Pearl surface, a combination of embossing and lacquering that guarantee the finished smooth and elegant matte feature that is highly resistant to scratches, tread and wear.



18942 Natural Oak



18832 Grey Oak



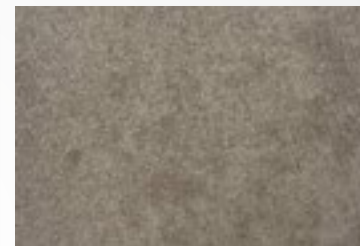
18792 Dark Oak



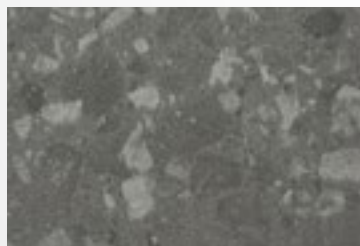
17122 Cool Concrete



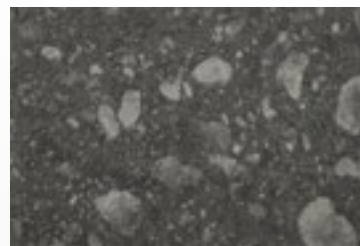
17132 Blue Concrete



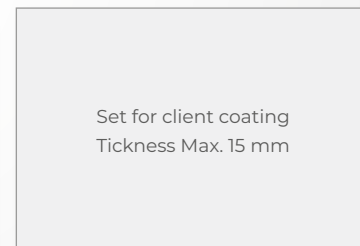
17412 Taupe Concrete



17512 Quartz Stone



17532 Coal Stone



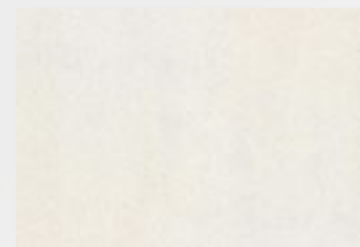
Floor's Client

Set for client coating  
Thickness Max. 15 mm



## GRANIT TOUCH

A mix obtained using grits of granite, quartz, glass and interlacing of glass mosaic. Most of the raw materials used are obtained by recycling Post-Consumption products. The perfect combination of these materials creates the right balance between technology and respecting the environment.



607 Polar Ice



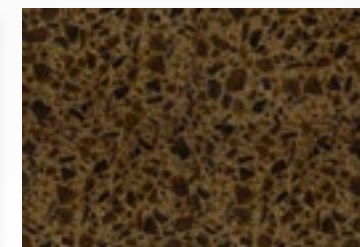
431 White



2402 Dove Tail



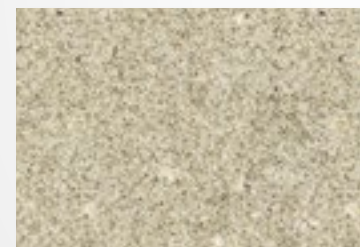
656 Black Star



663 Moretti Glass



424 Red



617 Sand Pearl



Carrara



## LAMINATED PLASTIC



746 Matt line



788 Wood



745 Wood



6050 Wraky



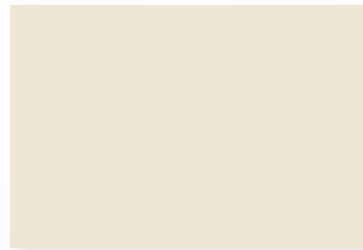
642 Velvet



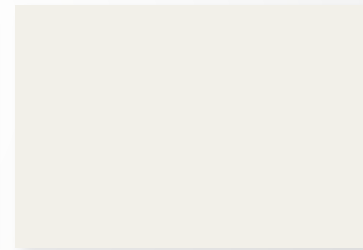
1027 Velvet



1039 Velvet



1174 Velvet



754 Velvet



1025 Velvet



1061 Velvet



## FINISHING SUMMARY

	LANDING DOORS		DOOR'S CAR		CAR		CABINET	STRUCTURE
	Swing	Automatic	Automatic	Folding	Monolith	Elegant		
Rust-proof Paint Finish	✓	—	—	—	—	—	✓	—
Galvanised and RAL Paint finish	✓	✓	—	—	—	—	✓	✓
RAL Paint Finish	✓	✓	✓	✓	✓	—	✓	✓
Stainless Steel	✓	✓	✓	✓	✓	—	✓	— <sup>1</sup>
Laminated Sheet Metal	—	✓	✓	—	✓	—	✓	—
Laminated Plastic	—	—	✓	—	—	✓	—	—
Natural Aluminium	✓	—	—	—	—	—	—	—
RAL Paint Finish Aluminium	✓	—	—	—	—	—	—	—

<sup>1</sup>On request





# ACCESSORIES



## DISPLAY

### TFT

High-resolution display  
Available 7", 4.3" e 2.8"



### TRICOLOR

LCD display  
Frame or flush anti-scratch  
and anti-impact transparent  
polycarbonate screen



### ICARO

LCD display  
Frame or flush anti-scratch  
and anti-impact transparent  
polycarbonate screen



## HANDRAIL

### STANDARD



Stainless steel handrail

### OAK WOOD



Wood handrail  
(available with supports and polished stainless steel terminals)

### BEECH WOOD



## BUTTONS

### STANDARD



AISI 304 stainless steel button with  
braille.

### VANDAL-PROOF IP54



Vandal-proof button with braille with  
degree of protection IP54.



## CAR DISPLAY

### VENICE



White and black glass  
H 1900 mm with display TFT 7"  
*(only for automatic car door)*

### AIDA



Scotch brite stainless steel  
H 1900 mm with display TFT 7"  
*(other furnitures available polished stainless steel)*

## LANDING DISPLAY

### AIDA 65

Polished stainless steel in a 65-mm width with flush Icaro display. Wall secured, without building work  
*(other available finishes: Scotch-Brite stainless steel)*

### AIDA 85

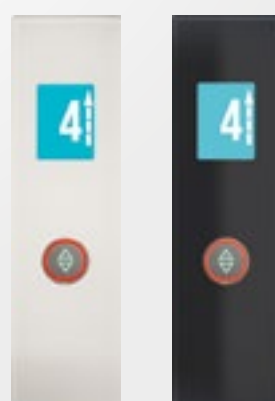
Scotch Brite stainless steel width 85 mm. Available with display 4.3" Wall secured, without building work  
*(other available finishes: polished stainless steel)*

### SOFT 75

Polished blue stainless steel, width 75 mm. Available with con icaro wire display Possibility of box to be walled  
*(other available finishes: Scotch-Brite stainless steel)*

### VENICE 80

In extra light white glass and float black glass. Width 80 mm. Available with TFT vertical display 2.8"



## HANDLES

### T20 - T30

Scotch brite stainless steel AISI 304  
ø20 x L 300  
ø30 x L 500



### TC30

Scotch brite stainless steel AISI 304  
ø30 x L 500  
ø30 x L 1000



### RC40

Scotch brite stainless steel AISI 304  
40 x 10 x L 500



### Q20

Scotch brite stainless steel AISI 304  
20 x 20 x L 320



### R40

Scotch brite stainless steel AISI 304  
40 x 15 x L 1260



## ENABLING SYSTEM

### I-BUTTON



### ENABLE KEYS



### ALPHANUMERIC KEYPAD

Car  
Until two contact



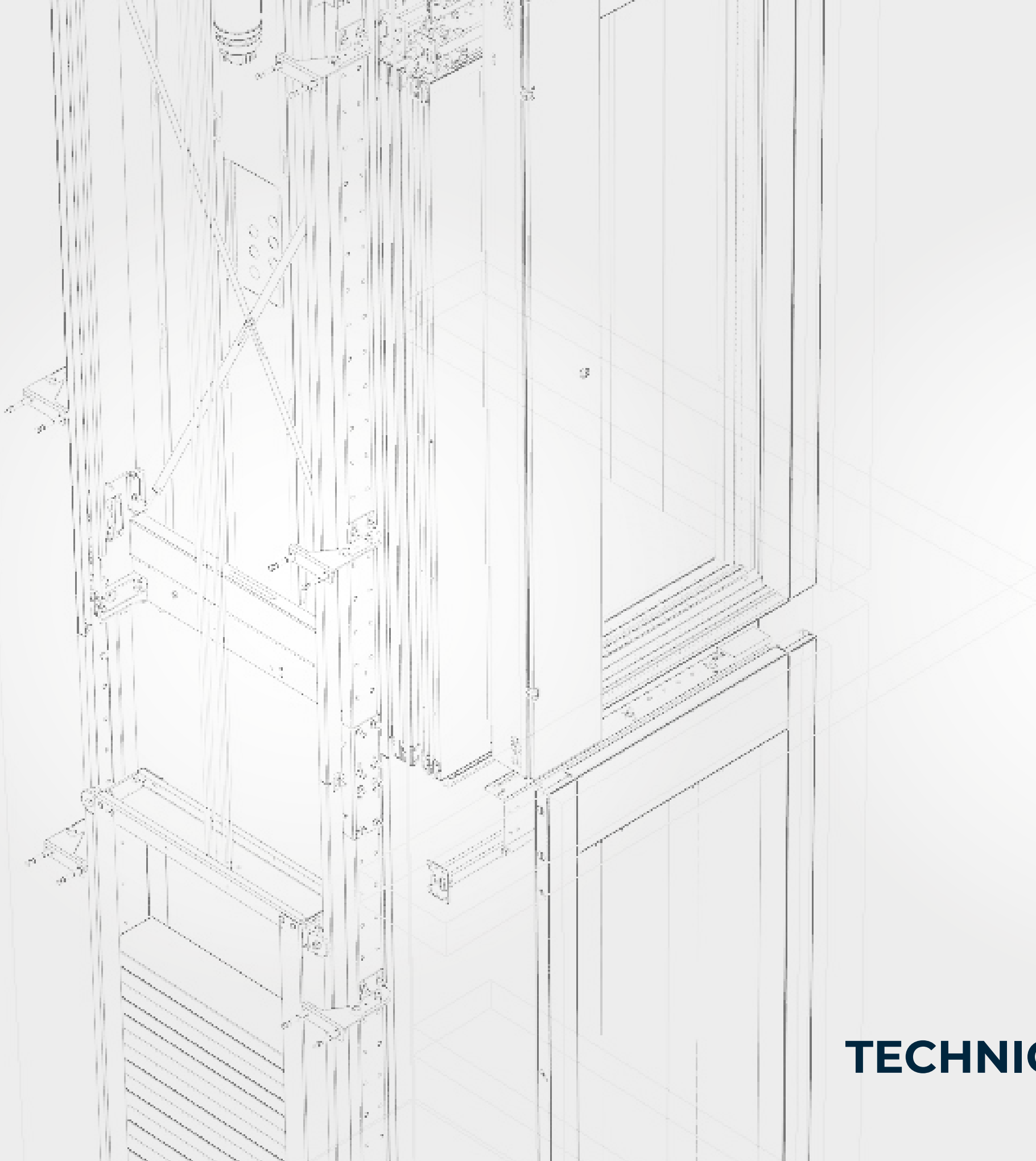
Floor  
Only one contact



## AUTOMATIC SWING DOOR OPENING SYSTEM



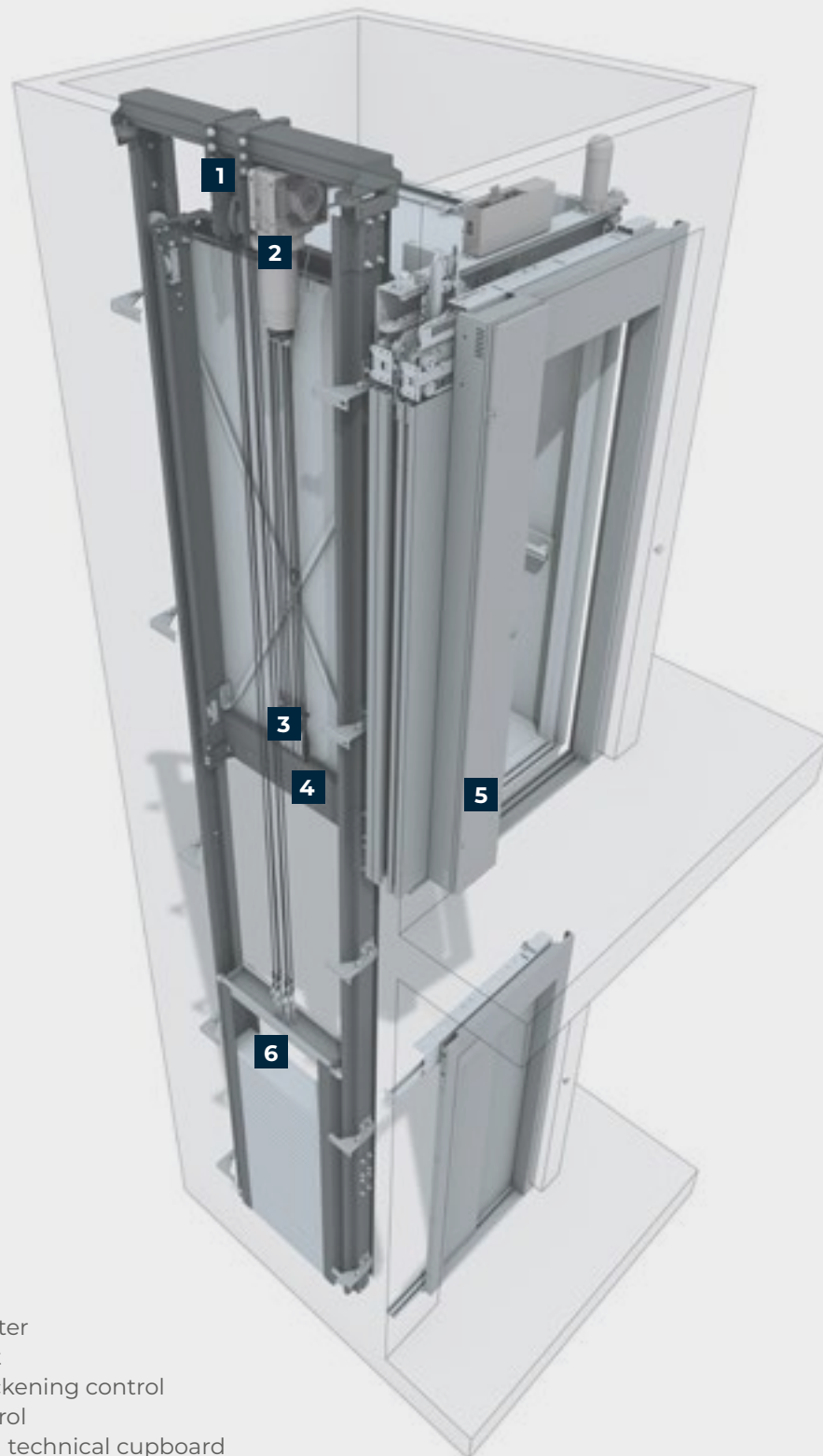




# 05

**TECHNICAL SPECIFICATIONS**

## TECHNICAL FEATURES



- 1. Speed limiter
- 2. Motor unit
- 3. Ropes slackening control
- 4. Load control
- 5. Integrated technical cupboard
- 6. Counterweight

Capacity	300kg	400kg
Reference legislation	<b>Direttiva Macchine 2006/42/CE EN81-41:2011</b> (where applicable)	
Capacity max (People)	<b>4</b>	<b>5</b>
Maximum Speed	<b>0,30</b>	<b>0,30</b>
Maximum number of stops	<b>8</b>	<b>8</b>
Hourly insertions	<b>45</b>	<b>45</b>
Travel (mm)	<b>24.000</b>	<b>24.000</b>
Headroom (mm)	<b>2.600</b>	<b>2.600</b>
Pit (mm)	<b>150</b>	<b>150</b>
Maximum car's area (m <sup>2</sup> )	<b>1,2</b>	<b>1,6</b>
Lift power supply	<b>Battery</b>	<b>Battery</b>
Committed power (kW)	<b>0,23</b>	<b>0,23</b>
Inrush absorption from the network (A)	<b>0,7</b>	<b>2</b>
Mains power supply (V)	<b>230</b>	<b>230</b>
Maximum travels in case of blackout	<b>60</b>	<b>45</b>
Recovery energy system	<b>Standard</b>	<b>Standard</b>
Anti Blackout System	<b>Standard</b>	<b>Standard</b>

min. interfloor	No door	Folding door	Automatic door
With doors on opposite sides and/or adjacent (mm)	<b>300</b>	<b>150</b>	<b>150</b>
With doors on the same side <sup>1</sup> (mm)	<b>H Door Frame + 100</b>	<b>H Door Frame + 100</b>	<b>H Opening + 350<sup>2</sup></b>

<sup>1</sup> Plants with close planes at both ends are not feasible

<sup>2</sup> H Opening + 400 with total glass doors





### STANDARD HEADROOM

Variants	Headroom (mm)	H Car (mm)	H Door width (mm)
Manual Swing Door	2600	2100	2000
Folding Door			
Automatic Car Door <sup>1</sup>			

### MINIMUM HEADROOM

Variants	Headroom (mm)	H Car (mm)	H Door width (mm)
Manual Swing Door	2400	2100	2000
Folding Door			
Automatic Car Door <sup>1</sup>			

### REDUCED HEADROOM

Variants	Headroom (mm)	H Car (mm)	H Door width (mm)
Manual Swing Door	2200	2000	2000
Folding Door			1900
Automatic Car Door <sup>1</sup>	2300	2100	1900

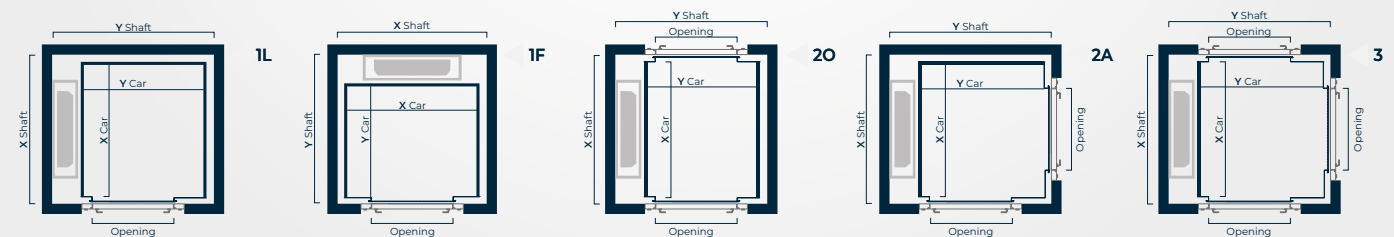
<sup>1</sup>+50 on headroom for total glass

Pit 150 mm for all elevators

### NO DOOR

CAPACITY			CAR				EXISTING SHAFT		STRUCTURE	
Load (Kg)	People	Accessibility	X (mm)	Y (mm)	Opening (mm)	Access	X (mm)	Y (mm)	X (mm)	Y (mm)
250	3	♿	800	1200	750	1F	970	1580	1150	1680
			1200	850		1L	1350	1240	1460	1360
350	4	♿	1300	950	800	2O	1340	1240	1440	1360
						1F	1110	1680	1200	1780
						1L	1450	1340	1560	1440
400	5	♿	1200	1200	800	3	1340	1580	1440	1680
						2A	1350	1580	1460	1680
			1400	1100	900	1F	1260	1780	1350	1880
						1L	1550	1490	1660	1590
450	6	♿	1300	1300	900	2O	1540	1490	1640	1590
						2A	1450	1680	1560	1780

It's possible to download all the schematics on our website [www.areascensori.it](http://www.areascensori.it) area Download



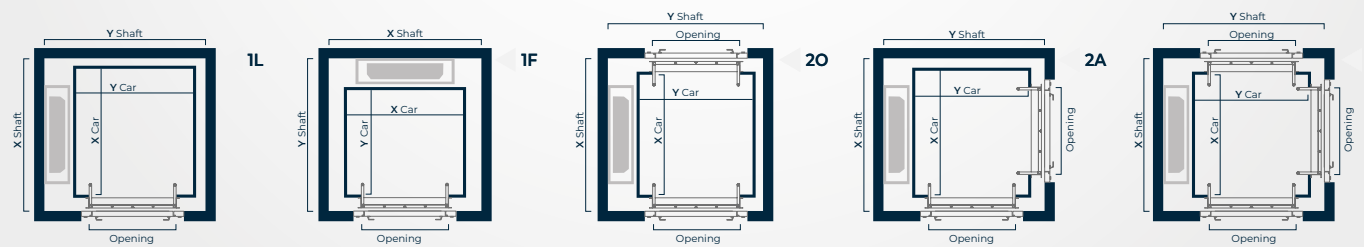
## FOLDING DOOR

CAPACITY			CAR				EXISTING SHAFT		STRUCTURE	
Load (Kg)	People	Accessibility	X (mm)	Y (mm)	Opening (mm)	Access	X (mm)	Y (mm)	X (mm)	Y (mm)
250	3	♿	800	1200	750	1F	970	1570	1150	1670
			1200	850	750	1L	1340	1240	1450	1360
						2O	1320	1240	1430	1360
350	4	♿	950	1300	800	1F	1110	1670	1200	1770
			1300	950	800	1L	1440	1340	1550	1440
						2O	1420	1340	1530	1440
400	5	♿	1100	1400	900	1F	1260	1770	1350	1870
			1200	1200	800	3	1320	1570	1430	1670
						2A	1340	1570	1450	1670
						1L	1540	1490	1650	1590
			1400	1100	900	2O	1520	1490	1630	1590
450	6	♿	1300	1300	900	2A	1440	1670	1550	1770

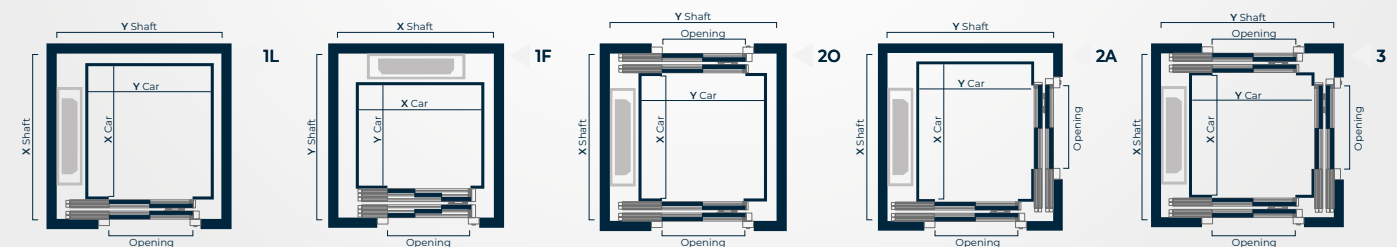
## AUTOMATIC DOORS

CAPACITY			CAR				EXISTING SHAFT		STRUCTURE	
Load (Kg)	Personne	Accessibility	X (mm)	Y (mm)	Opening (mm)	Access	X (mm)	Y (mm)	X (mm)	Y (mm)
250	3	♿	1000	1200	750	1F	1170	1820	1320	1920
			1200	900	750	1L	1500	1300	1610	1440
						2O	1640	1300	1740	1440
350	4	♿	1000	1300	750	1F	1170	1920	1320	2020
			1300	950	750	1L	1600	1340	1710	1440
						2O	1740	1340	1840	1440
400	5	♿	1100	1400	800	1F	1260	2020	1390	2120
			1200	1200	800	3	1640	1730	1740	1830
						2A	1500	1730	1610	1830
						1L	1700	1490	1810	1590
			1400	1100	800	2O	1840	1490	1940	1590
450	6	♿	1300	1300	800	2A	1600	1830	1710	1930

It's possible to download all the schematics on our website [www.areascensori.it](http://www.areascensori.it) area **Download**



It's possible to download all the schematics on our website [www.areascensori.it](http://www.areascensori.it) area **Download**





# THE SMALLEST

## Manual Swing Door

CAPACITY			CAR				EXISTING SHAFT		STRUCTURE	
Load (Kg)	People	Accessibility	X (mm)	Y (mm)	Opening (mm)	Access	X (mm)	Y (mm)	X (mm)	Y (mm)
150	2	♿	600	550	500	1L	750	940	830	1030
				600	550	1F	770	980	830	1070
				550	500	2O	740	940	820	1030
						2A	750	930		
				700	550	2A	770	1080	830	1170
				550	500	3	740	930		
				700	550	3	740	1080	820	1170

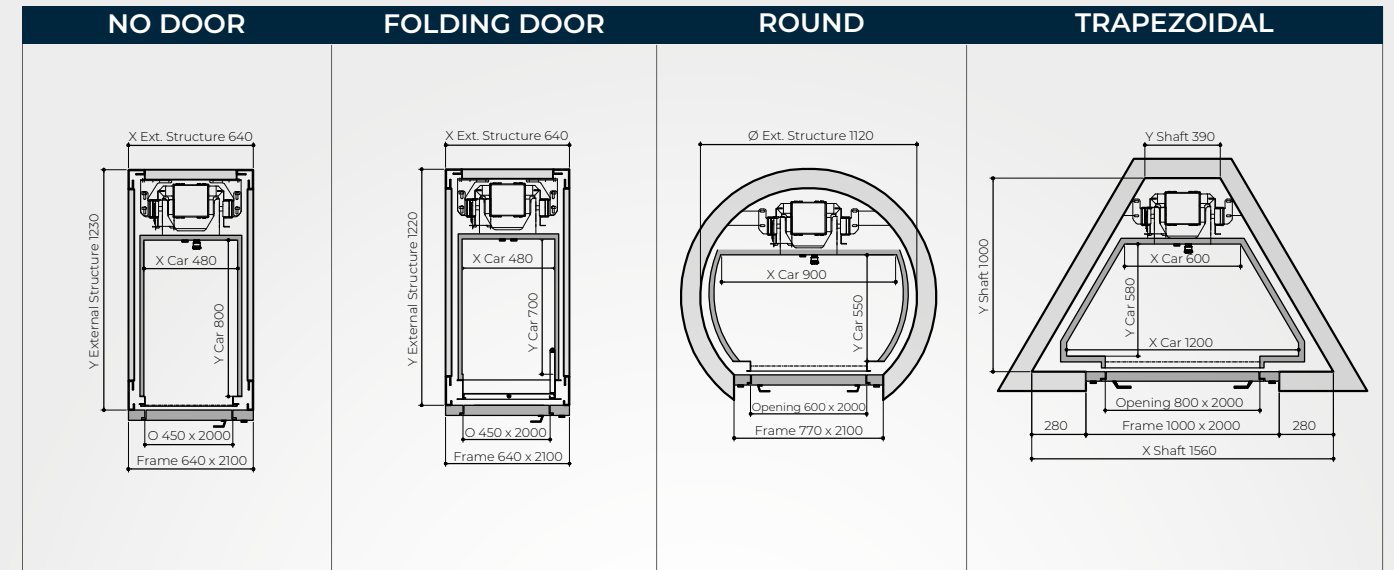
## Folding Door

CAPACITY			CAR				EXISTING SHAFT		STRUCTURE	
Load (Kg)	People	Accessibility	X (mm)	Y (mm)	Opening (mm)	Access	X (mm)	Y (mm)	X (mm)	Y (mm)
150	2	♿	700	550	500	2O	820	940	900	1030
			700	550	500	1L	840	940	920	1030
			600	700	550	1F	770	1070	840	1160
			750	650	500	2A	900	1020	970	1110
			850	650	500	3	970	1020	1050	1160

## Automatic Car door

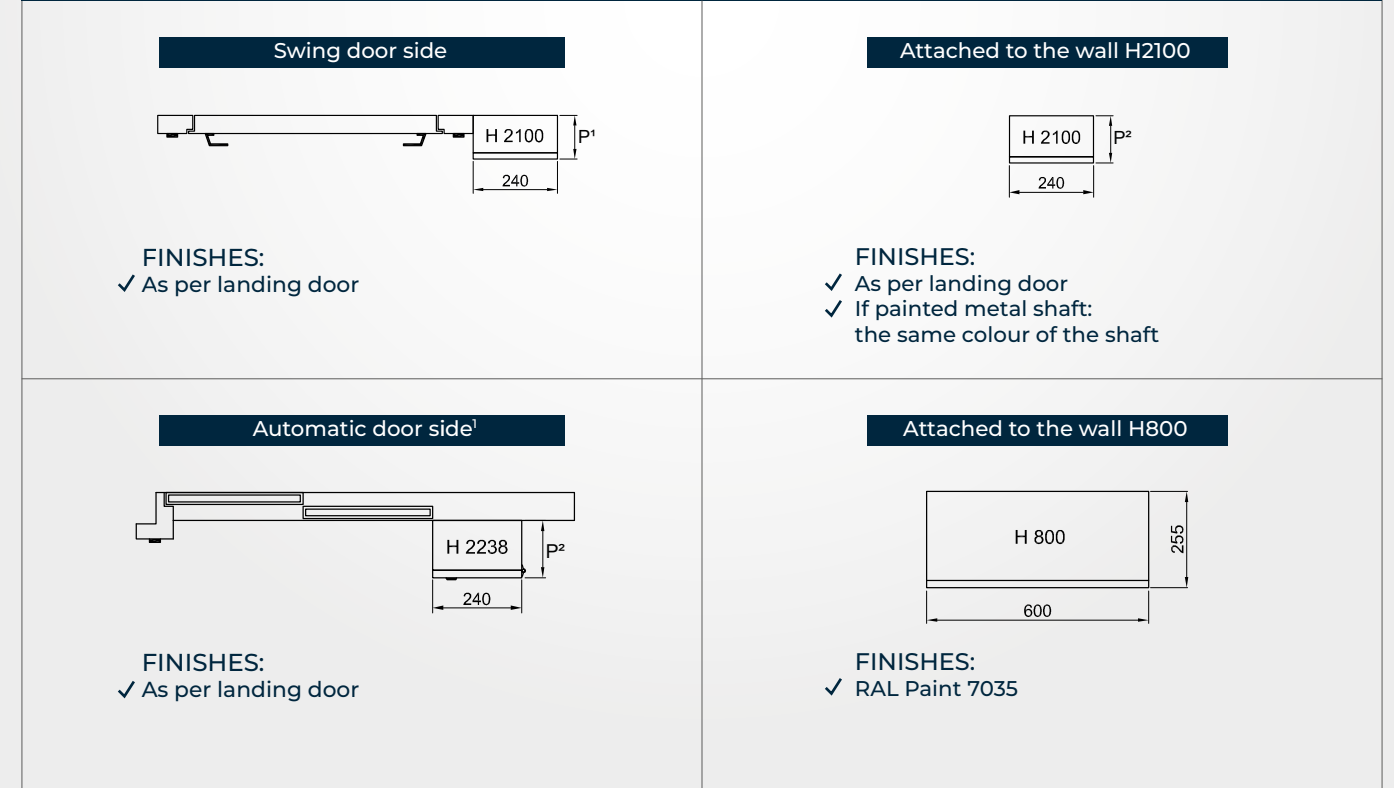
CAPACITY			CAR				EXISTING SHAFT		STRUCTURE	
Load (Kg)	People	Accessibility	X (mm)	Y (mm)	Opening (mm)	Access	X (mm)	Y (mm)	X (mm)	Y (mm)
150	2	♿	670	750	550	1F	900	1370	970	1460
					550	1F	900	1220	970	1310
			700	600	500	2A	1020	1140	1100	1230
					550	500	1L	1070	940	1150
			750	550	500	2O	1220	940	1300	1060
					500	2A	1070	1140	1150	1230
					500	3	1220	1145	1300	1235

# SPECIALS



Min headroom 2600mm

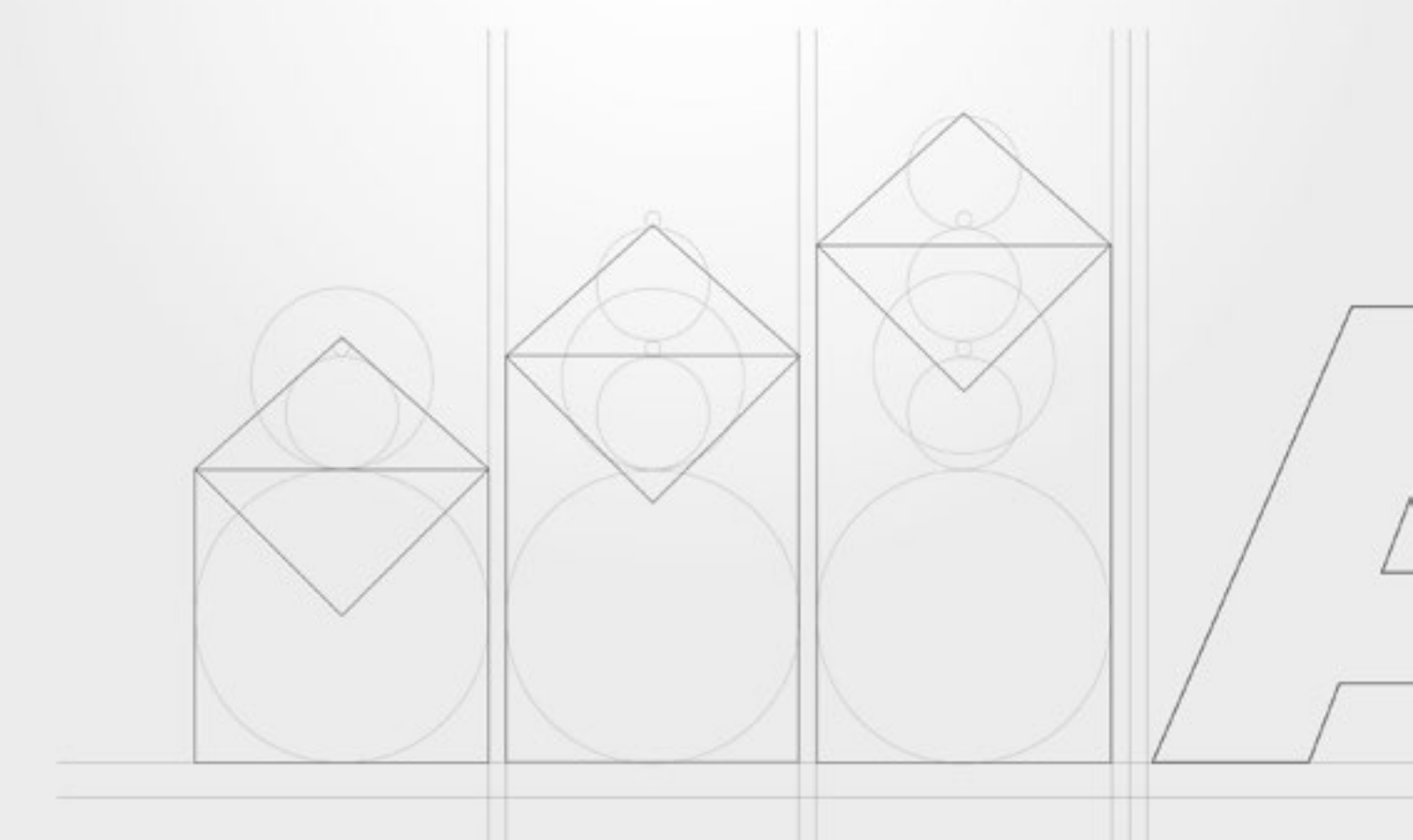
## TECHNICAL CABINET



P1 = 145 for load ≤ 400 kg; 170 for load > 400 kg

P2 = 150 for load ≤ 400 kg; 175 for load > 400 kg

<sup>1</sup> Cannot be done with Glass & Metal, Total Glass, 3AT doors, with non-standard door height and EI





[www.areascensori.it](http://www.areascensori.it)

## Indonesia Authorized Partner



### PT. Pardi Solusi Abadi

#### Jakarta Office:

Griya Idola Industrial Park Blok L #21-23 Jl. Raya Serang Km. 12  
Tangerang, Banten - INDONESIA  
Ph. +62 21 - 59643532

#### Surabaya Office:

Northwest Boulevard NV15 No. 25 Pakal Citraland  
Surabaya, Jawa Timur - INDONESIA  
Ph. +62 21 - 59643532

#### Showroom:

Brooklyn SOHO Tower East Unit 6-I Alam Sutera,  
Tangerang, Banten  
Email. [mail@pardisolusi.com](mailto:mail@pardisolusi.com)  
Web. [www.pardisolusi.com](http://www.pardisolusi.com)



Ascensori Risparmio Energetico

**ARE Srl** - Via E. Fermi, 29

51010 Massa e Cozzile (PT) Italia

P.Iva: 01703750479

Tel: +39 0572 767991

[commerciale@areascensori.it](mailto:commerciale@areascensori.it)

ARE reserves the right to make changes to the product in any part and without notice. The representation and description of the products in the catalogue have an indicative value. A possible discrepancy of the finished product with respect to the representation does not constitute a ground for complaint, being the order made the only benchmark. © ARE LIFTS - All rights reserved