



TikTok Account of
FRANZ Home Lift



Xiaohongshu Account of
FRANZ Home Lift



Kuaishou Account of
FRANZ Home Lift



Video Account of
FRANZ Home Lift



WeChat Official Account of
FRANZ Home Lift

Indonesia Authorized Partner



PARDI SOLUSI ABADI

PT. Pardi Solusi Abadi

Jakarta Office:

Griya Idola Industrial Park Blok L #21-23
Jl. Raya Serang Km. 12
Tangerang, Banten - INDONESIA
Ph. +62 21 - 59643532

Surabaya Office:

Northwest Boulevard NV15 No. 25
Pakal Citraland
Surabaya, Jawa Timur - INDONESIA
Ph. +62 21 - 59643532

Showroom:

Brooklyn SOHO Tower East Unit 6-I
Alam Sutera, Tangerang, Banten
Email. mail@pardisolusi.com
Web. www.pardisolusi.com



FRANZ INTELLIGENT ELEVATOR CO.,LTD.

Add :Zhangjiagang High-tech Zone, Suzhou City,
Jiangsu Province,China

Tel :0512-55600200

Web:www.franzlift.com

Service hotline: 4000-699-856

2022.07



FRANZ

We Know Elevator
We Know Life Better



www.franzlift.com

Continue Germany's century-old craftsmanship
Create high-quality villa elevator

For your love, serve you wholeheartedly

Created by Craftsmanship	01
Shaft Solutions	13
Car Decoration	16
Decoration Configuration	25
Civil Engineering Drawing	35
Function Table	37
Classic Case	39



Craftsmanship for a Better Life

In May 1876, at the 6th World Expo held in Philadelphia, the United States, Franz Reuleaux, a German Engineer known as the “Father of Modern Kinematics”, bitterly acknowledged the rough quality of German products, and criticized the production principle of the German industry at that time - low cost and forged and fake commodities.

The brave words of Mr. Franz Reuleaux awakened the sleeping German business community. Under the national unity and opportunities of the industrial revolution era, Germans constantly explored the technological innovation, firmly and diligently improved the products, and finally changed their image and made the “Made in Germany” away from the label of “knockoff” and become a symbol of excelsior.

Indeed, the “Made in China” now takes the old path of the “Made in Germany”. We are now in the historical period of transformation of China from a manufacturer of quantity to one of quality. In the face of opportunities of this era, we need to possess both Germany’s manufacturing technologies and Germany’s manufacturing spirit.

Deeply realizing this, FRANZ focuses on core team for German elevator technology for more than 15 years, while studying German technology and advanced management method with a history of nearly one hundred years, and actively inherits Germany’s one-century spirit of originality. Let’s open a bright chapter in the field of home elevator in China, and pay our respect to Mr. Franz with excellent reputation.



Meticulous Attitude, Everlasting Quality

FRANZ inherits Germany’s spirit of originality

Persisting in innovation

Widely praised

With our “high quality”

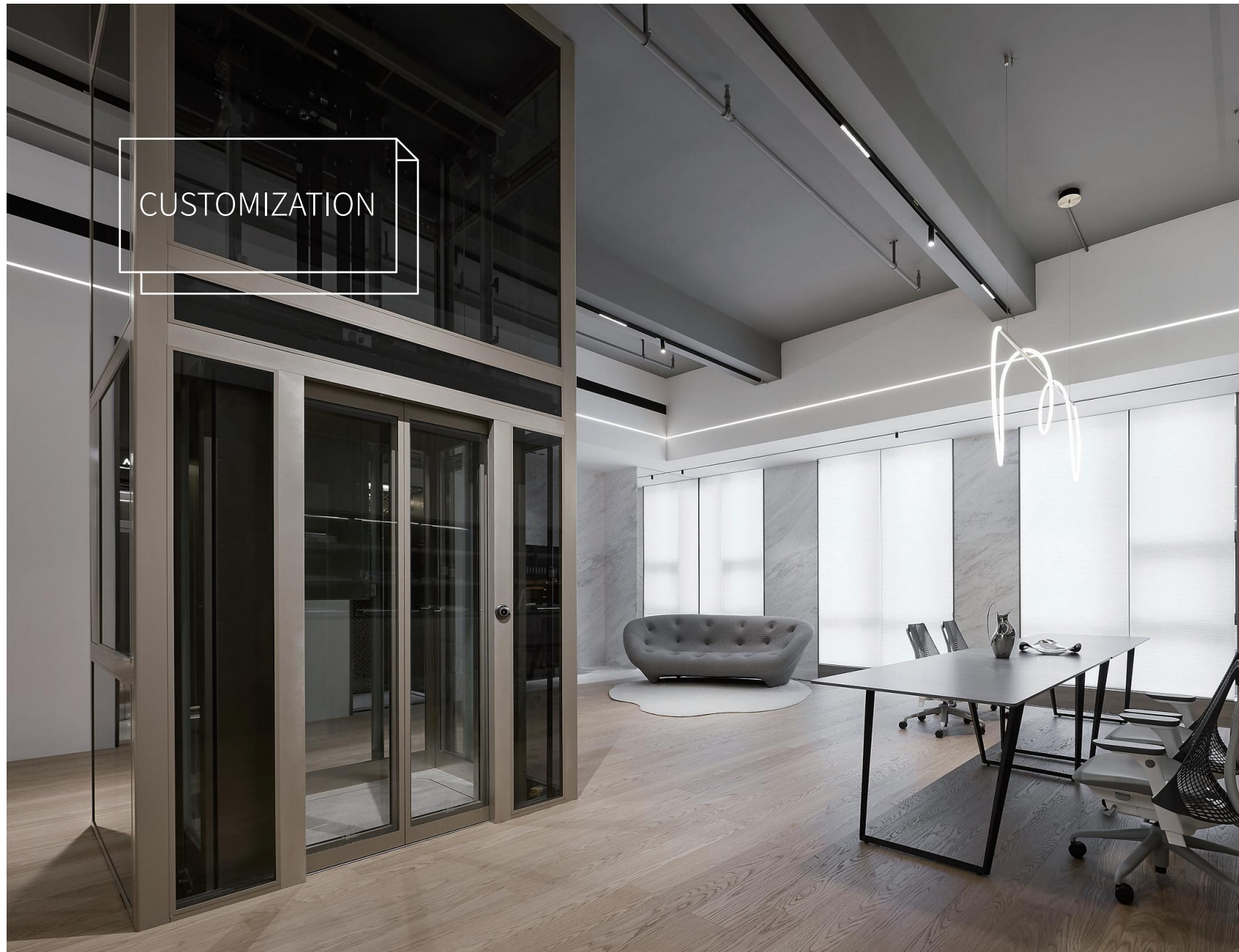
We follow the principles of modern aesthetics

Integrating home elements into elevator design

To create a comfortable and relaxing home atmosphere and

Write a bright chapter for happy life





CUSTOMIZATION

All You Need

FRANZ has rich product lines, and can customize the most appropriate solution according to the home space size and customers' layout requirements to meet your personalized needs.

Flexible in size - it can be installed in a minimum space of 0.8m²

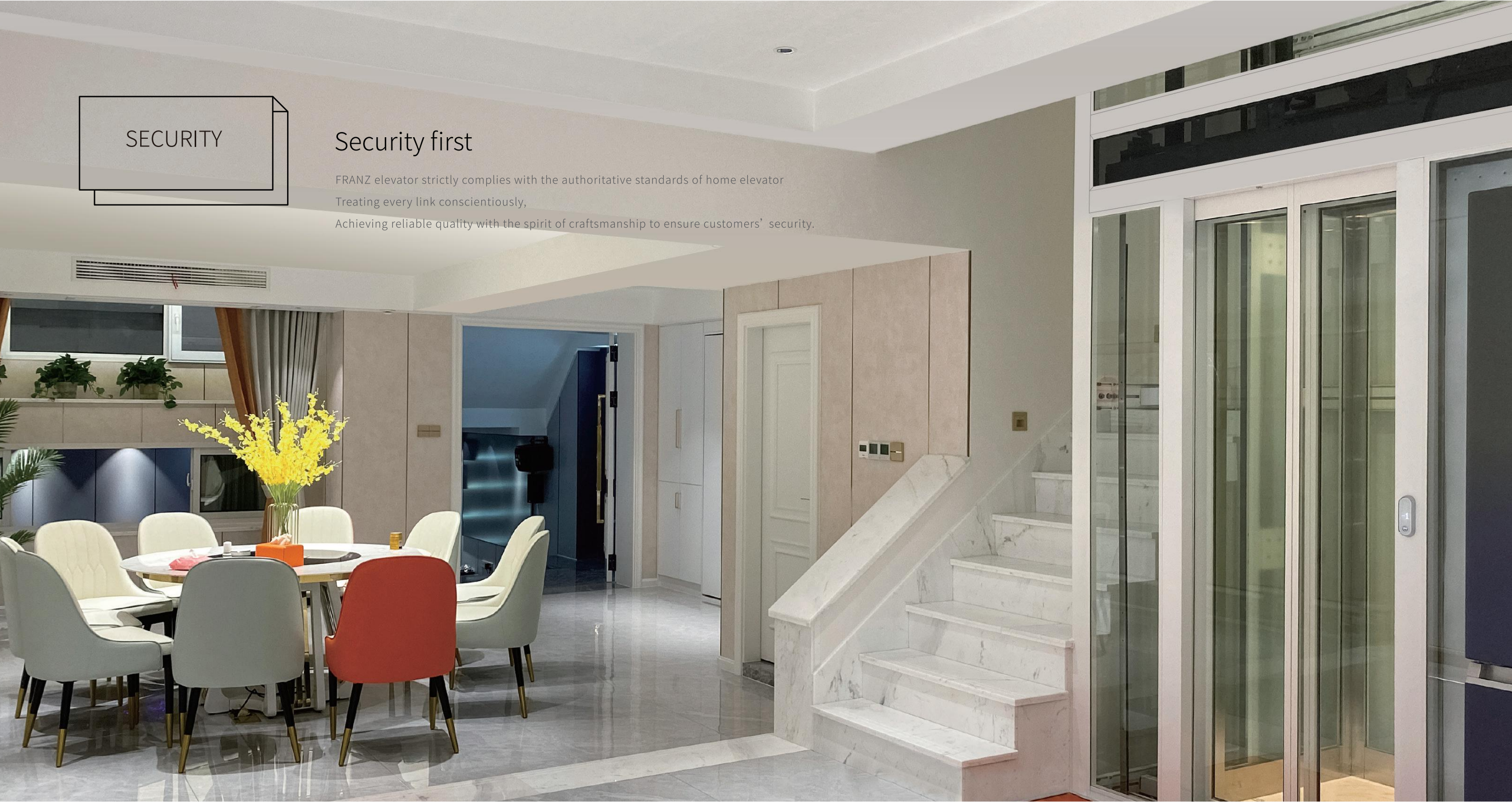
Flexible in scenario - solutions can also be customized for bottomless pit and low top level.

Achieve the real "One villa with one unique solution". No matter how different the shaft is, we will always provide the most reasonable solutions for you to choose

Diversification

FRANZ elevator car has diversified decoration styles, which can be matched with customers' preferences to highlight their unique taste!





SECURITY

Security first

FRANZ elevator strictly complies with the authoritative standards of home elevator
Treating every link conscientiously,
Achieving reliable quality with the spirit of craftsmanship to ensure customers' security.

Multiple protection

FRANZ elevator applies security components such as safety gear, speed limiter and buffer certified by the national authority, and takes intelligent protection measures and multiple protection measures such as ARD automatic rescue system, one-key dialing system, absolute encoder and remote monitoring system to ensure customers' security.

ARD automatic rescue system

Ensure that the elevator continues to operate after power failure
Avoid people being trapped in elevator and other situations

One-key dialing system

Call access function
One-key automatic dialing
Automatic answering of incoming call

Absolute encoder

Avoid losing elevator position data in case of power failure
Improve data reliability



Intelligent control system

FRANZ elevator control system is a modular and digital structure

Using dual 32-bit CPU chip

To keep elevator operation more intelligent, more stable and more reliable.

Intelligent technology

FRANZ adopts intelligent AI technology to provide customers with many intelligent services, including remote monitoring, voice call, gesture call, face recognition, one-key calling and other intelligent functions.





COMFORT

Smooth operation

FRANZ elevator adopts permanent magnet synchronous gear-less hoisting machine and industry-leading steel belt driving system, and the steel belt is covered with high-strength polyurethane material TUP, combined with VVVF frequency variable control system, for smooth operation of elevator.

No noise

The FRANZ elevator car system consists of permanent magnet synchronous hoisting machine, steel belt and ultra-silent control cabinet. Its unique silent design minimizes the noise of elevator operation to a near-perfect extent!

Steel belt: no lubricating oil needs to be used; reduce friction noise with metal and grooving noise; quiet operation

Ultra-silent control cabinet: ultra-thin design, ultra-silent operation

Energy saving and environmental protection

FRANZ elevator adopts environment-friendly materials from permanent magnet synchronous hoisting machine to lighting LED.

Flexible voltage (220/380V) supply can achieve high efficiency and low consumption, and the power consumption can be saved by 45% compared with the elevator of steel wire rope.

Quick response at all stages Serve your ideal life

FRANZ team always adheres to the [customer-centered] principle, ensures to respond to customers' requirements in the first time, customizes exclusive solutions, provides the professional elevator maintenance and protection service, and makes customers at ease in after-sales.



Shaft Solutions

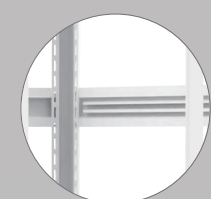
Steel plate bending shaft



Premium painted metal frame

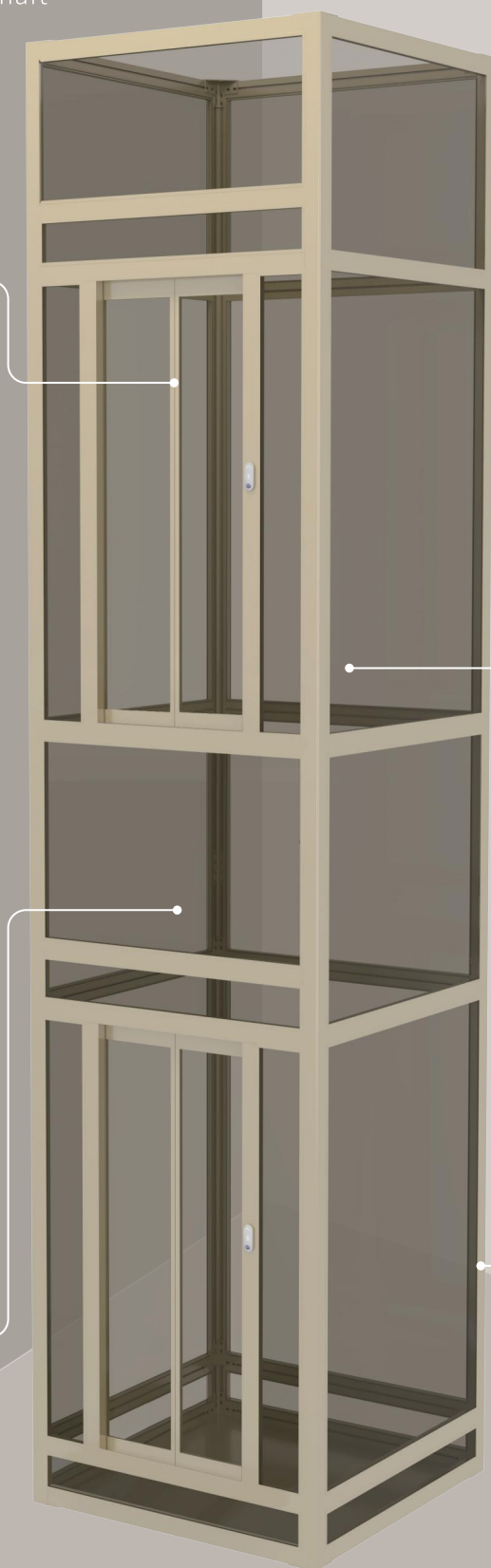


White



Steel frame

Aluminum profile frame shaft



Hall door



Full transparent glass



Frosted glass

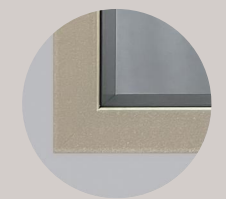


Sky grey glass



Brown glass

Glass



Built-in frame glass



Bright moon white



Titanium



Champagne gold



Black



Grey

Aluminum profile frame



- More reasonable main machine installation mode
Reduce the burden on buildings
No welding treatment required
- Primary and secondary guide rails both made of solid guide rails
- High-strength aluminum profile glass frame design from original factory, with more beautiful appearance and no trouble of adhesive strip falling off
- Narrow frame glass door - simple and aesthetically pleasing
- FRANZ unique integrated shaft and control cabinet design makes the control cabinet placed without another space found separately, which is aesthetically pleasing and can save the space

FZ-910S

Ceiling: Aluminum alloy frame, LED light source

Back wall: Champagne gold aluminum frame,
5+5 laminated tempered glass

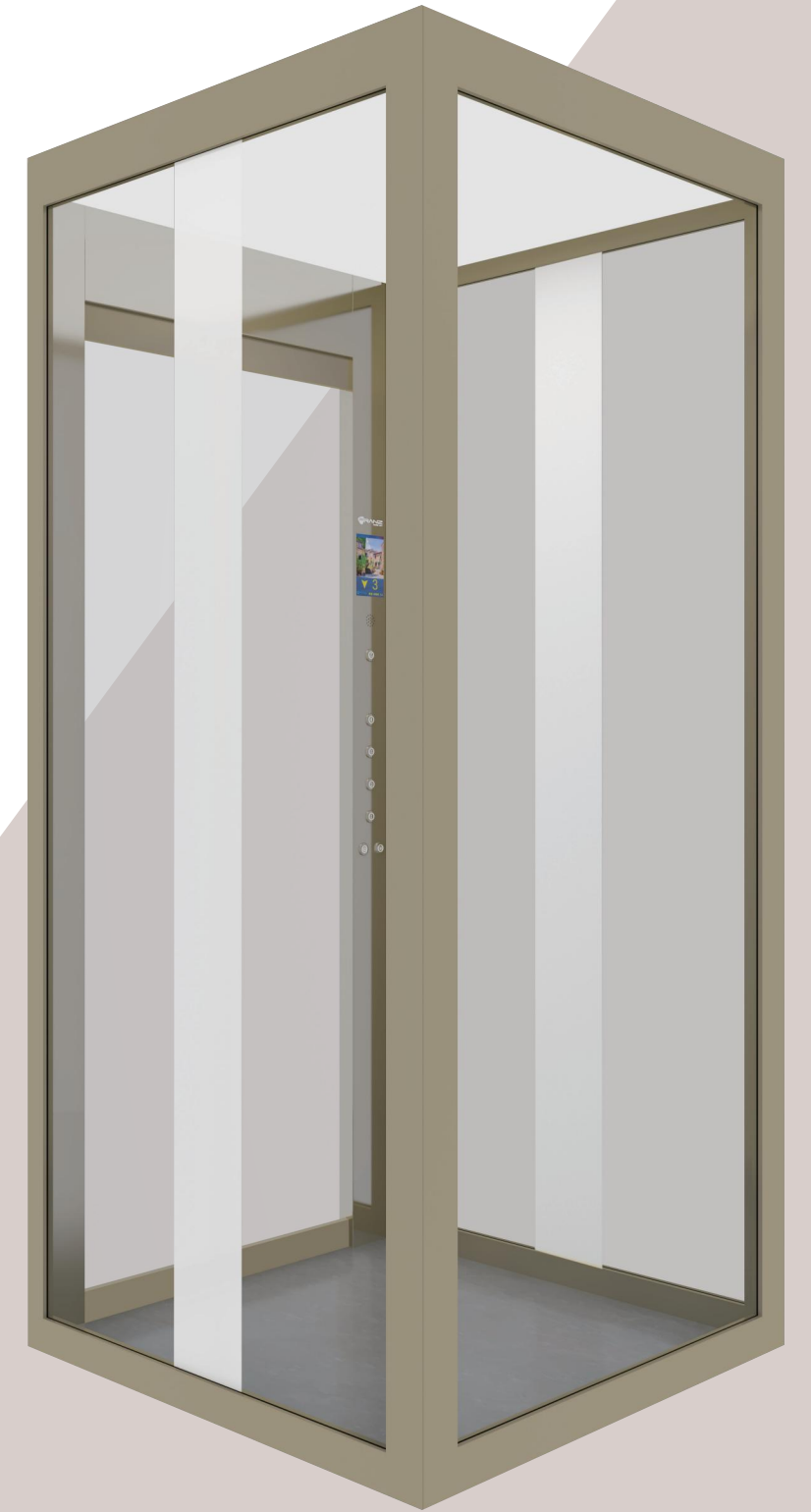
Side walls: Champagne gold aluminum frame,
5+5 laminated tempered glass with white printing in the middle

Floor: PVC (optional quartz stone or marble)



Scan QR code Learn more

Notes: the picture is drawn by computer and may be slightly different from the actual product received. Please refer to our available product.



FZ-901X

- Ceiling: Mirror stainless steel, LED spotlights
- Back wall: Mirror etching craft stainless steel, Hairline stainless steel
- Side walls: Hairline stainless steel, Mirror stainless steel
- Floor: PVC (optional quartz stone or marble)



Scan QR code Learn more

Notes: the picture is drawn by computer and may be slightly different from the actual product received. Please refer to our available product.



FZ-912

- Ceiling: Hairline stainless steel frame, Acrylic light-transmitting board
- Back wall: Champagne gold mirror sandblasted stainless steel, Mirror stainless steel
- Side walls: Wood grain steel plate, Mirror stainless steel
- Floor: PVC (optional quartz stone or marble)



Scan QR code Learn more

Notes: the picture is drawn by computer and may be slightly different from the actual product received. Please refer to our available product.



FZ-911

- Ceiling: Rose gold mirror stainless steel frame, Acrylic light-transmitting plate
- Back wall: Mirror etching craft stainless steel
- Side walls: Rose gold mirror stainless steel, Rose gold hairline stainless steel
- Floor: PVC (optional quartz stone or marble)



Scan QR code Learn more

Notes: the picture is drawn by computer and may be slightly different from the actual product received. Please refer to our available product.



FZ-914

- Ceiling: Wood grain steel plate, LED spotlights, LED strip lights
- Back wall: Mirror stainless steel, Wood grain steel plate
- Side walls: Mirror stainless steel, Wood grain steel plate
- Floor: PVC (optional quartz stone or marble)



Scan QR code Learn more

Notes: the picture is drawn by computer and may be slightly different from the actual product received. Please refer to our available product.

FZ-917

Car roof: Mirror stainless steel, LED spotlights
Back wall: Wood grain steel plate, Mirror stainless steel
Side walls: Wood grain steel plate, Mirror stainless steel
Floor: PVC (optional quartz stone or marble)



Scan QR code Learn more

Notes: the picture is drawn by computer and may be slightly different from the actual product received. Please refer to our available product.



FZ-101

Ceiling: White wood veneer, Linear light, Spotlights
Back wall: High-tech wood veneer, Aluminum profile edging,
Inlaid aluminum profile lines, Mirror stainless steel
Left side wall: Mirror stainless steel
Right side wall: High-tech wood veneer, Aluminum profile edging,
Inlaid aluminum profile lines, Mirror stainless steel
Floor: PVC (optional quartz stone or marble)



Scan QR code Learn more

Notes: the picture is drawn by computer and may be slightly different from the actual product received. Please refer to our available product.



FZ-918

Ceiling: White wood veneer, Linear lights, Spotlights
Back wall: Wood grain steel plate, Line light, Mirror stainless steel
Side walls: Wood grain steel plate, Line lights, Mirror stainless steel
Floor: PVC (optional quartz stone or marble)



Scan QR code Learn more

Notes: the picture is drawn by computer and may be slightly different from the actual product received. Please refer to our available product.



FZ-102

Ceiling: White wood veneer, Linear light, Spotlights
Back wall: Irregular leather texture hard roll, Linear light,
Aluminum profile decorative strip
Side walls: Mirror stainless steel, Black titanium mirror stainless steel
Floor: PVC (optional quartz stone or marble)



Scan QR code Learn more

Notes: the picture is drawn by computer and may be slightly different from the actual product received. Please refer to our available product.

FZ-103

- Ceiling: White wood veneer, Constellation spotlights
- Back wall: Mirror stainless steel
- Side walls: Leather grain hard roll, Linear lights, Mirror stainless steel
- Floor: PVC (optional quartz stone or marble)



Scan QR code Learn more

Notes: the picture is drawn by computer and may be slightly different from the actual product received. Please refer to our available product.



FZ-105

- Ceiling: White wood veneer, Linear lights, Spotlights
- Back wall: High-tech wood veneer, Aluminum profile edging, Inlaid aluminum profile lines, Line light, Mirror stainless steel
- Side walls: High-tech wood veneer, Aluminum profile edging, Inlaid aluminum profile lines, Line lights, Mirror stainless steel
- Floor: PVC (optional quartz stone or marble)



Scan QR code Learn more

Notes: the picture is drawn by computer and may be slightly different from the actual product received. Please refer to our available product.



FZ-104

- Ceiling: White wood veneer, Linear lights, Spotlights
- Back wall: Leather grain hard roll, Linear lights, Rose gold mirror stainless steel
- Side walls: Leather grain hard roll, Aluminum profile decorative strip, Rose gold mirror stainless steel
- Floor: PVC (optional quartz stone or marble)



Scan QR code Learn more

Notes: the picture is drawn by computer and may be slightly different from the actual product received. Please refer to our available product.



FZ-106

- Ceiling: White wood veneer, Aluminum profile edging, Ambient light, Spotlights
- Back wall: High-tech wood veneer, Marbled wood veneer, Aluminum profile edging, Skirting
- Side walls: Green bronze brushed stainless steel
- Floor: PVC (optional quartz stone or marble)



Scan QR code Learn more

Notes: the picture is drawn by computer and may be slightly different from the actual product received. Please refer to our available product.

FZ-107

Ceiling: White wood veneer, Aluminum glow light, Champagne gold mirror stainless steel

Back wall: Shadow wood veneer, Aluminum profile edging, Champagne gold mirror stainless steel

Side walls: Shadow wood veneer, Aluminum profile edging, Champagne gold mirror stainless steel

Floor: PVC



Scan QR code Learn more



Notes: the picture is drawn by computer and may be slightly different from the actual product received. Please refer to our available product.

FZ-109

Ceiling: White wood veneer, Aluminum profile edging, Inlaid aluminum profile lines, Ambient light, Spotlights

Back wall: Ambient light, Woven design hard roll, Black titanium mirror stainless steel

Side walls: Black walnut wood veneer, Aluminum profile edging, Inlaid aluminum profile lines, Ambient light, Black titanium mirror stainless steel

Floor: PVC (optional quartz stone or marble)



Scan QR code Learn more



Notes: the picture is drawn by computer and may be slightly different from the actual product received. Please refer to our available product.



FZ-108

Ceiling: White wood veneer, Aluminum profile edging, Inlaid aluminum profile lines, Ambient light

Back wall: High-tech wood veneer, Aluminum profile edging, Inlaid aluminum profile lines, Mirror stainless steel

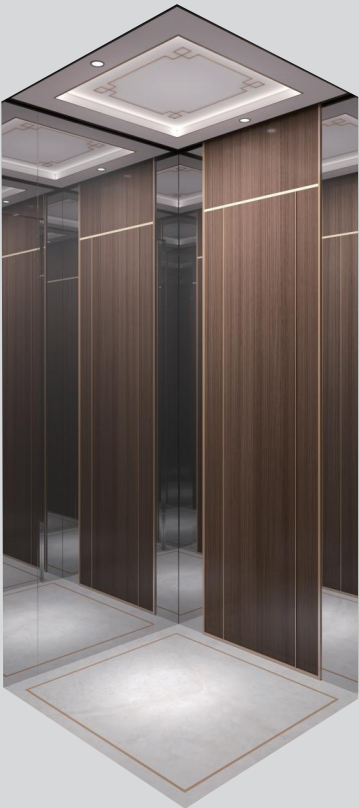
Side walls: High-tech wood veneer, Aluminum profile edging, Inlaid aluminum profile lines, Mirror stainless steel

Floor: PVC (optional quartz stone or marble)



Scan QR code Learn more

Notes: the picture is drawn by computer and may be slightly different from the actual product received. Please refer to our available product.



FZ-110

Ceiling: White wood veneer, Aluminum profile edging, Inlaid aluminum profile lines, Ambient light, Spotlights

Back wall: Mirror stainless steel

Side walls: High-tech wood veneer, Aluminum profile edging, Inlaid aluminum profile lines, Line lights, Mirror stainless steel

Floor: PVC (optional quartz stone or marble)



Scan QR code Learn more

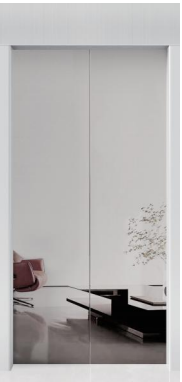
Notes: the picture is drawn by computer and may be slightly different from the actual product received. Please refer to our available product.

Door Panel Display



FZ-ST21

Material: 304 hairline



FZ-ST22

Material: 304 mirror



FZ-ST23

Material: Natural color sandblasting anti-fingerprint



FZ-ST24

Material: Rose gold mirror



FZ-ST25

Material: Rose gold mirror sandblasted anti-fingerprint



FZ-ST26

Material: Champagne gold mirror



FZ-ST27

Material: Champagne gold mirror sandblasting anti-fingerprint



FZ-ST28

Material: Champagne gold irregularly-polished lines anti-fingerprint



FZ-ST29

Material: Bronze mirror sandblasting anti-fingerprint



FZ-ST30

Material: Black titanium hairline anti-fingerprint



FZ-ST07

Material: Champagne gold mirror etching craft



FZ-ST15

Material: Champagne gold hairline etching craft



FZ-ST31

Material: E-521 Wood grain steel plate



FZ-ST08

Material: Red bronze hairline etching craft



FZ-ST16

Material: Bronze mirror sandblasting etching craft



FZ-ST02

Material: E-41 wood grain steel plate



FZ-ST09

Material: Rose gold mirror etching craft



FZ-ST17

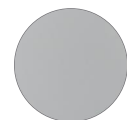
Material: Titanium mirror etching craft



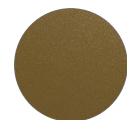
Manual Door



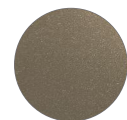
Frame color



Bright moon white



Titanium



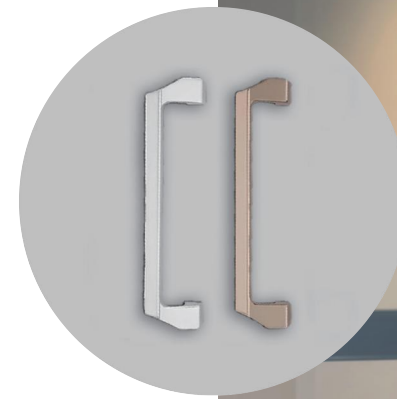
Champagne gold



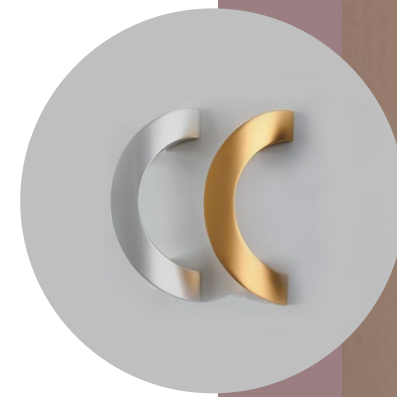
Black



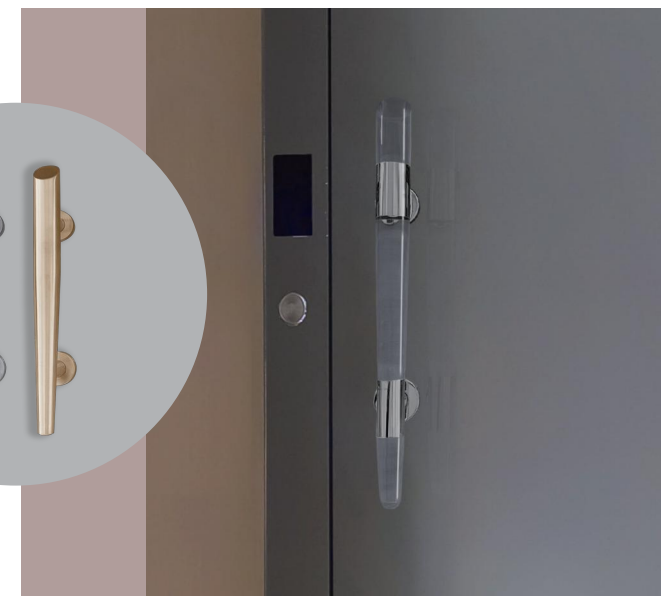
Grey



Handle color: Silver, Champagne gold
Glass color: Frosted glass, Transparent glass,
Sky grey glass, Brown glass
Handle model: Door handle 01



Handle color: Silver, Titanium gold
Glass color: Frosted glass, Transparent glass,
Sky grey glass, Brown glass
Handle model: Door handle 03



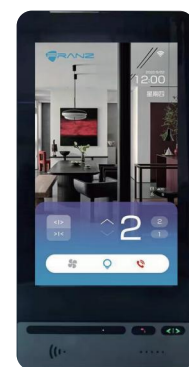
Handle color: Silver, Titanium gold
Glass color: Frosted glass, Transparent glass,
Sky grey glass, Brown glass
Handle model: Door handle 04

Manipulator Display



FZ-JC02

Buttons can be customized



FZ-JC12



FZ-JC09

Intelligent Hall call



FZ-JH12A1



FZ-JH12A2



FZ-JH12A3



FZ-JH15



FZ-JH17



FZ-JH13A1



FZ-JH13A2



FZ-JH13A3



FZ-JH19



FZ-JH18



FZ-JH05A1



FZ-JH05A2



FZ-JH05A3



FZ-JH02

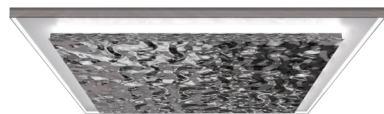


FZ-JH03S

Ceiling Display



FZ-VD03 Starry Sky



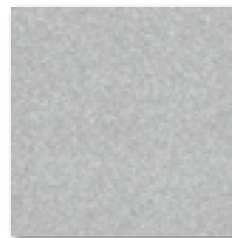
FZ-VD04 Water



FZ-VD05 Boundless

Floor Display

Standard type: PVC



FZ-FP01



FZ-FP02

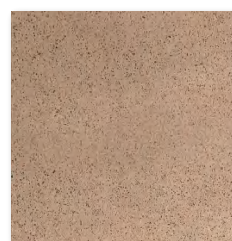


FZ-FP03



FZ-FP04

Optional type: Quartz stone



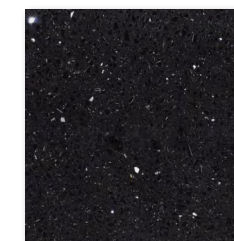
FZ-RZ01



FZ-RZ02



FZ-RZ03



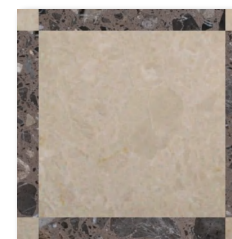
FZ-RZ04



FZ-RZ05



FZ-RZ06

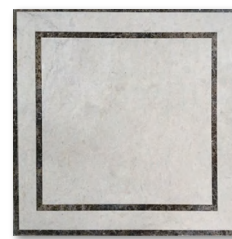


FZ-RZ07



FZ-RZ08

Optional type: Marble



FZ-FM02



FZ-FM05



FZ-FM06

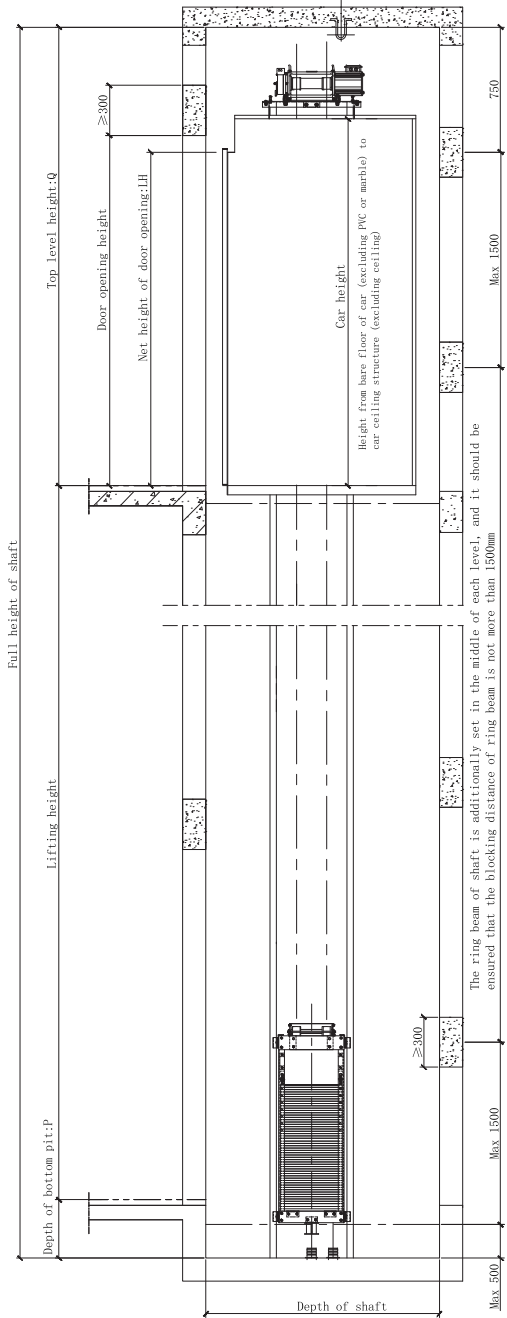


FZ-FM07

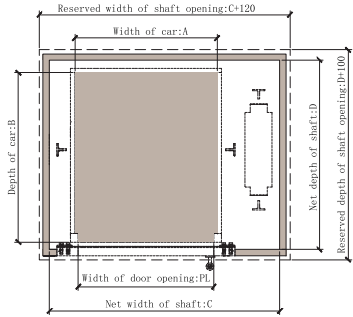
Elevator civil construction drawing

Youjia G1 series

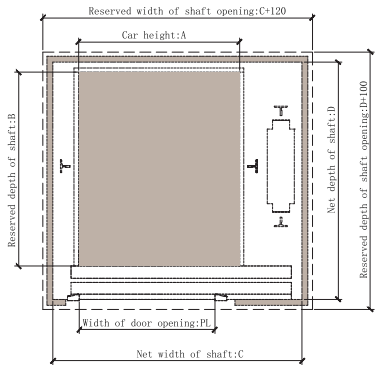
Well Elevation



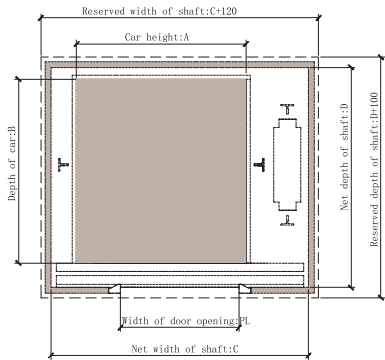
Layout plan of hoistway-hand pulled door



Layout plan of hoistway-side door

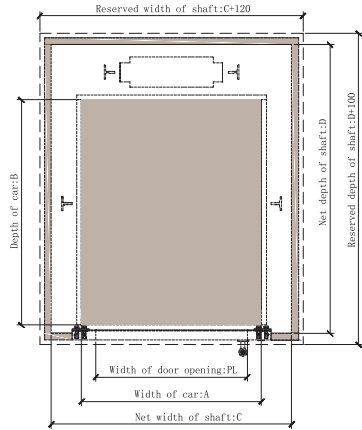


Layout plan of the hoistway-central opening

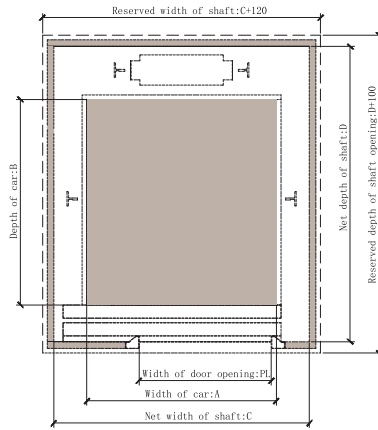


Youjia G2 series

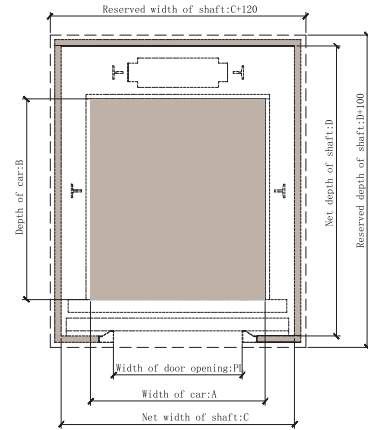
Layout plan of hoistway-hand pulled door



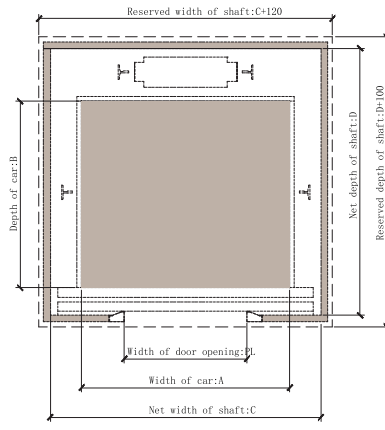
Layout plan of hoistway-side door



Layout plan of hoistway-central opening with bifolding door

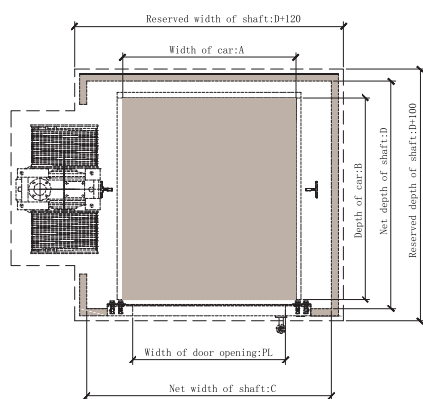


Layout plan of the hoistway-central opening

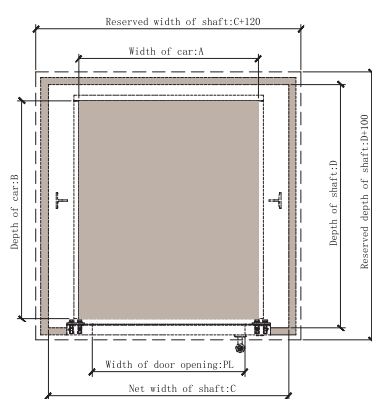


IKEA Q series

Floor plan of down-mounted shaft



Plane layout of top-mounted shaft



Elevator function table

		Note: * is an optional function	
Full protection	Transducer fail-safe system	Smooth operation	Collective selection control
	Nearest landing operation when fault happens		Door opening and closing time and speed selective collective control
	Inspection operation		
	Overload protection	The message says	In-car multimedia
	When the elevator encounters a fault, it will stop and display the fault		Running direction and floor display
	Reverse run protection		
	ARD power failure emergency device	Ride in comfort	Car lighting automatic control
	End Station Protection		Car pre-selection floor command elimination function
	Electric break release device		Car reverse command cancel
	Light curtain protection		
	Emergency lighting	Intelligent control	Intelligent voice control in the car *
	Emergency door unlocking function		IC card function *
	Absolute encoder *		Face recognition *
	Electronic safety gear *		Fingerprint recognition *

Classic Case

- ① Kaisa Fengming Waterfront
- ② Sunac Jinghu Chenyuan
- ③ Triumph Sand County
- ④ Star Lake Garden



- ⑤ Zhoushan catchment
- ⑥ Kanazawa Garden
- ⑦ Cathay Pacific



- ⑧ Shengwa Kuri Katsumi
- ⑨ Longhu Yanlan Mountain
- ⑩ Lotus Pond Moonlight

- ⑪ Xijiao Manor
- ⑫ Tianli Yonghe Mansion
- ⑬ CCCC Yangxian Meilu

